



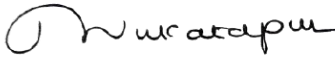
**K S INSTITUTE OF TECHNOLOGY,  
BENGALURU – 560109**  
**DEPARTMENT OF COMPUTER SCIENCE AND ENGINEERING**

**ATTAINMENT OF CO'S FOR ALL COURSES**

**2017-2021 BATCH**

Sl. No	Sem	Subject Name & Code	CO 1	CO 2	CO 3	CO 4	CO 5	Avg
1	I	17MAT11-Engineering Mathematics - I	3	3	3	3	3	3
2		17PHY11-Engineering Physics	3	3	3	3	3	3
3		17CIV13 –Elements if Civil Engineering & Mechanics	3	3	3	3	3	3
4		17EME14-Elements of Mechanical Engineering	3	3	3	3	3	3
5		17ELE15-Basic Electrical Engineering	3	3	3	3	2.10	2.82
6		15PHY17-Engineering Physics	3	3	3	3	3	3
7		15WSL16-Workshop Practice	3	3	3	3	3	3
8	II	17MAT21- Engineering Mathematics – II	3	3	3	3	3	3
9		17CHE22-Engineering Chemistry	3	3	3	3	3	3
10		17PCD23 Programming with C & Data Structures	1.20	2.10	1.20	1.20	1.20	1.38
11		17CED24- Computer Aided Engineering Drawing	3	3	3	3	3	3
12		17ELEN25-Basic Electronics	3	3	3	3	3	3
13		15CPL26- Computer Programming Laboratory	3	3	3	3	3	3
14		15CHE27-Engineering Chemistry Laboratory	3	3	3	3	3	3
15	III	17MAT31-Engineering Mathematics - III	3	3	3	3	3	3
16		17CS32-Analog and Digital Electronics	3	3	3	3	3	3
17		17CS33-Data Structures and Applications	3	2.10	2.10	3	2.10	2.46
18		17CS34-Computer Organization	3	3	3	3	3	3
19		17CS35-Unix and Shell Programming	3	2.10	2.10	3	3	2.64
20		17CS36-Discrete Mathematical Structures	3	3	2.10	2.10	3	2.64
21		17CSL37-Analog and Digital Electronics Laboratory	3	3	3	3	3	3
22		17CSL38-Data Structures Laboratory	3	3	3	3	3	3
23		17KL39-Kannada	3	3	3	3	3	3
24	IV	17MAT41-Engineering Mathematics - IV	3	3	3	3	3	3
25		17CS42- Object Oriented Concepts	3	3	3	3	3	3
26		17CS43-Design and Analysis of Algorithms	0.30	0.30	0.30	0.30	0.30	0.30
27		17CS44-Microprocessors and Microcontrollers	2.1	1.2	0.3	2.1	1.2	1.38
28		17CS45- Software Engineering	0.30	0.30	0.30	1.2	1.2	0.66

29		17CS46-Data Communication	1.2	1.2	1.2	2.1	2.1	1.56
30		17CSL47-Design and Analysis of Algorithm Laboratory	3	3	3	3	3	3
31		17CSL48-Microprocessors Laboratory	3	3	3	3	3	3
32		17CPH49- Constitution of India, Professional Ethics and Human Rights	3	3	3	3	3	3
33	V	17CS51 Management and Entrepreneurship for IT Industry	3	3	3	3	3	3
34		17CS52 Computer Networks	0.30	0.30	0.30	0.30	0.30	0.30
35		17CS53 Database Management System	0.30	0.30	0.30	0.30	0.30	0.30
36		17CS54 Automata theory and Computability	0.30	0.30	0.30	0.30	1.20	0.48
37		17CSL57 Computer Network Laboratory	3	3	3	3	3	3
38		17CSL58 DBMS Laboratory with mini project	3	3	3	3	3	3
39	VI	17CS61 Cryptography, Network Security and Cyber Law	3	3	3	3	3	3
40		17CS62 Computer Graphics and Visualization	3	3	3	3	3	3
41		17CS63 System Software and Compiler Design	3	3	3	3	3	3
42		17CS64 Operating Systems	3	3	3	3	3	3
43		17CSL67 System Software and Operating System Laboratory	3	3	3	3	3	3
44		17CSL68 Computer Graphics Laboratory with mini project	3	3	3	3	3	3
45	VII	17CS71-Web Technology and its applications	2.1	2.1	1.2	2.1	2.1	1.92
46		17CS72-Advanced Computer Architectures	2.10	2.10	2.10	2.10	2.10	2.10
47		17CS73-Machine Learning	3	3	3	2.10	2.10	2.64
48		17CSL76-Machine Learning Laboratory	3	3	3	3	3	3
49		17CSL77-Web Technology Laboratory with mini project	3	3	3	3	3	3
50		17CSP78-Project Phase 1 + Seminar	3	3	3	3	3	3
51	VIII	17CS81-Internet of Things and Applications	3	3	3	3	3	3
52		17CS82-Big Data Analytics	3	3	3	3	3	3
53		17CS84-Internship / Professional Practice	3	3	3	3	3	3
54		17CSP85 Project work phase II	3	3	3	3	3	3
55		17CSS86 Seminar	3	3	3	3	3	3

  
 Head of the Department  
 Dept. of Computer Science & Engg.  
 K.S. Institute of Technology  
 Bengaluru -560 109



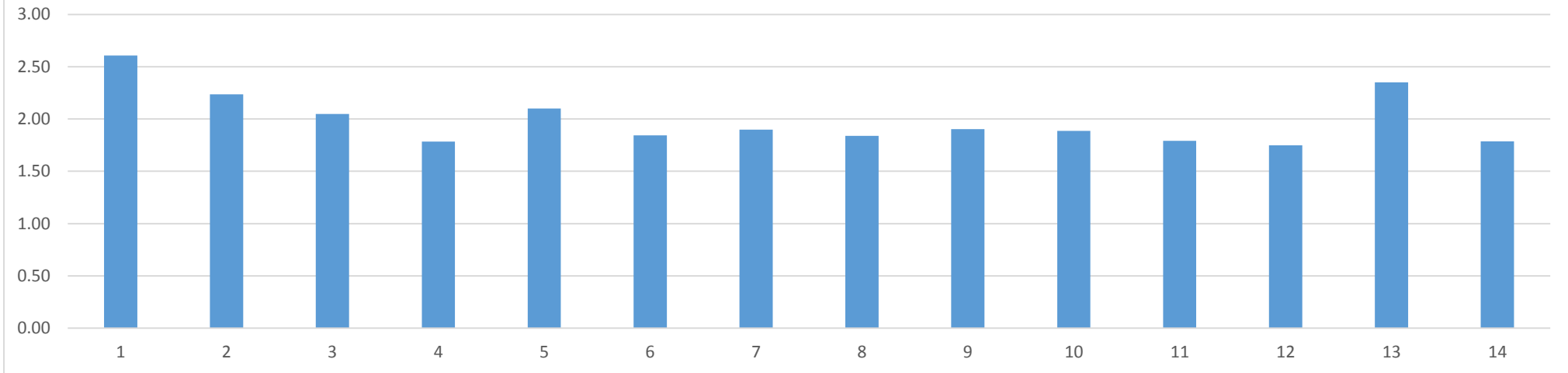
16	ANALOG AND DIGITAL ELECTRONICS	17CS32	C202	3.00	3.00	2.00	-	-	-	-	-	-	-	-	-	3.00	2.00
17	DATASTRUCTURES AND APPLICATIONS	17CS33	C203	2.46	2.46	1.64	-	-	-	-	-	-	-	-	-	2.46	0.82
18	COMPUTER ORGANIZATION	17CS34	C204	3.00	1.60	1.80	-	-	-	-	-	-	-	-	-	3.00	1.00
19	UNIX SHELL PROGRAMMING	17CS35	C205	2.64	1.22		-	-	-	-	-	-	-	-		2.64	1.08
20	DISCRETE MATHEMATICAL STRUCTURES	17CS36	C206	1.76	2.64	1.40	1.85	-	-	-	-	-	-	-		1.76	1.02
21	ANALOG AND DIGITAL ELECTRONICS LABORATORY	17CSL37	C207	3.00	3.00	2.00	-	3.00	-	-	-	-	-	-	-	2.00	2.00
22	DATASTRUCTURES LAB	17CSL38	C208	3.00	2.00	2.00	-	1.00	-	-	-	-	-	-	-	3.00	1.00
23	Kannada	17KL39	C209	-	-	-	-	-	2.00	-	-	-	2.00	-	-	-	-
24	ENGG. MATHEMATICS – IV	17CS41	C210	3.00	2.20	1.20	-	-	-	-	-	-	-	-	-	-	1.00
25	SOFTWARE ENGINEERING	17CS42	C211	3.00	3.00	3.00	-	2.00	-	-	-	2.00	-	-	2.00	3.00	3.00
26	DESIGN AND ANALYSIS OF ALGORITHMS	17CS43	C212	0.20	0.26	0.30	0.18	0.30	0.20		0.25	0.25	0.25	0.20	0.25	0.26	0.30
27	MICROPROCESSORS & MICROCONTROLLERS	17CS44	C213	1.38	1.16	0.92	-	-	-	-	-	-	-	-	-	1.00	1.00
28	OBJECT ORIENTED CONCEPTS	17CS45	C214	0.22	0.26	0.25	0.25	0.40	0.20	0.18	0.20	0.10	0.10		0.07	0.12	0.22
29	DATA COMMUNICATION	17CS46	C215	1.56	0.68	0.50	-	-	-	-	-	-	-	-	-	1.56	0.52
30	DESIGN AND ANALYSIS OF ALGORITHMS LABORATORY	17CSL47	C216	3.00	2.00	2.00	-	2.00	-	-	-	-	-	-	-	3.00	1.00
31	MICROPROCESSORS & MICROCONTROLLERS & LABORATORY	17CSL48	C217	3.00	2.40	2.40	2.00	-	-	-	-	-	-	-	-	2.40	2.00
32	CONSTITUTION OF INDIA, PROFESSIONAL	17CPH49	C218	-	-	-	-	-	3.00	3.00	3.00	-	-	-	-	-	-

	ETHICS AND HUMAN RIGHTS																
33	MANAGEMENT AND ENTREPRENEURSHIP FOR IT INDUSTRY	17CS51	C301	-	-	-	-	-	1.60	1.20	1.60	1.00	1.00	1.33	-	-	-
34	COMPUTER NETWORKS	17CS52	C302	0.30	0.18	0.12	-	-	-	-	-	-	-	-	-	0.20	0.20
35	DATABASE MANAGEMENT SYSTEMS	17CS53	C303	0.30	0.30	0.20	0.18	0.10	0.20	-	-	0.20	0.10	-	0.16	0.30	0.20
36	AUTOMATA THEORY AND COMPUTABILITY	17CS54	C304	1.20	1.20	0.80	-	-	-	-	-	-	-	-	-	1.20	0.40
37	COMPUTER NETWORK LABORATORY	17CSL57	C307	3.00	2.00	3.00	2.00	2.00	-	-	-	-	-	-	-	2.00	1.00
38	DATABASE MANAGEMENT SYSTEMS WITH MINI PROJECT	17CSL58	C308	2.80	2.80	2.80	-	2.80	-	-	-	3.00	3.00	-	2.00	2.80	2.00
39	CRYPTOGRAPHY, NETWORK SECURITY AND CYBER LAW	17CS61	C309	3.00	2.00	1.80	-	2.00	-	-	-	2.00	-	-	2.00	2.00	2.00
40	COMPUTER GRAPHICS AND VISUALIZATION	17CS62	C310	2.80	2.00	1.80	1.00	2.60	-	-	-	1.20	1.00	-	1.00	2.80	2.60
41	SYSTEM SOFTWARE AND COMPILER DESIGN	17CS63	C311	3.00	2.00	2.00	-	2.00	-	-	-	2.00	2.00	-	-	2.00	1.00
42	OPERATING SYSTEMS	17CS64	C312	2.80	2.80	2.60	-	-	-	-	-	-	-	-	-	2.60	2.00
43	SYSTEM SOFTWARE AND OPERATING SYSTEM LAB	17CSL67	C315	3.00	3.00	3.00	-	-	-	-	-	-	-	-	-	3.00	2.00
44	COMPUTER GRAPHICS LABORATORY WITH MINI PROJECT	17CSL68	C316	3.00	3.00	3.00	-	3.00	-	-	-	2.20	2.20	-	1.00	3.00	2.00
45	WEB TECHNOLOGY AND ITS APPLICATIONS	17CS71	C401	3.00	3.00	3.00	-	2.00	-	-	-	2.00	-	-	2.00	3.00	3.00
46	ADVANCED COMPUTER ARCHITECTURE	17CS72	C402	2.10	2.10	0.70	-	1.40	-	-	-	-	-	-	0.70	2.10	0.84
47	MACHINE LEARNING	17CS73	C403	2.64	1.76	1.76	-	1.76	-	-	-	-	0.88	-	0.88	2.64	1.76

48	MACHINE LEARNING LABORATORY	17CSL76	C406	3.00	2.00	2.00	-	2.00	-	-	-	-	1.00	-	1.00	3.00	2.00
49	WEB TECHNOLOGY LABORATORY WITH MINI PROJECT	17CSL77	C407	3.00	3.00	2.00	1.80	1.00	1.00	-	-	1.00	-	1.50	1.00	3.00	1.00
50	PROJECT WORK PHASE – I + SEMINAR	17CSP78	C408	2.25	2.66	2.00	1.00	1.00	2.50	1.67	2.00	2.00	2.20	2.33	1.00	2.00	2.00
51	INTERNET OF THINGS TECHNOLOGY	17CS81	C409	2.60	2.80	3.00	2.60	3.00	2.00	1.80	-	3.00	1.00	1.75	2.40	3.00	3.00
52	BIG DATA ANALYTICS	17CS82	C410	2.00	2.00	3.00	2.00	3.00	-	-	-	-	-	-	2.00	3.00	2.00
53	INTERNSHIP/ PROFESSIONAL PRACTISE	17CS84	C412	3.00	3.00	3.00	2.50	2.00	2.00	-	2.00	3.00	3.00	2.00	2.00	2.40	3.00
54	PROJECT WORK PHASE – II	17CSP85	C413	2.75	2.33	2.66	2.33	2.40	2.00	1.00	1.80	3.00	3.00	1.80	1.60	2.00	2.00
55	SEMINAR	17CSS86	C414	2.80	3.00	-	2.75	-	2.00	2.00	-	-	3.00	-	2.00	2.00	2.00

	PO1	PO2	PO3	PO4	PO5	PO6	PO7	PO8	PO9	PO10	PO11	PO12	PSO1	PSO2
<b>Direct Attainment [A]</b>	2.51	2.05	1.81	1.48	1.88	1.55	1.62	1.55	1.63	1.61	1.49	1.43	2.19	1.48
<b>Program Exit Survey</b>	3.00	3.00	3.00	3.00	3.00	3.00	3.00	3.00	3.00	3.00	3.00	3.00	3.00	3.00
<b>Alumni Survey</b>	3.00	3.00	3.00	3.00	3.00	3.00	3.00	3.00	3.00	3.00	3.00	3.00	3.00	3.00
<b>Indirect Attainment [B]</b>	3.00	3.00	3.00	3.00	3.00	3.00	3.00	3.00	3.00	3.00	3.00	3.00	3.00	3.00
<b>C= A * 0.8</b>	2.01	1.64	1.45	1.18	1.50	1.24	1.30	1.24	1.30	1.29	1.19	1.15	1.75	1.19
<b>D = B * 0.2</b>	0.60	0.60	0.60	0.60	0.60	0.60	0.60	0.60	0.60	0.60	0.60	0.60	0.60	0.60
<b>Total Attainment [C+D]</b>	2.61	2.24	2.05	1.78	2.10	1.84	1.90	1.84	1.90	1.89	1.79	1.75	2.35	1.79

### PO & PSO Attainment



PO1	PO2	PO3	PO4	PO5	PO6	PO7	PO8	PO9	PO10	PO11	PO12	PSO1	PSO2
-----	-----	-----	-----	-----	-----	-----	-----	-----	------	------	------	------	------

*Murugesan*  
Head of the Department  
Dept. of Computer Science & Engg.  
K.S. Institute of Technology  
Bengaluru -560 109

**K S Institute of Technology**  
**Department of Electronics and Communication Engg**  
**Attainment of Course Outcomes 2017-21 batch (2017 scheme)**

<b>Course Name &amp; Code</b>	<b>CO1</b>	<b>CO2</b>	<b>CO3</b>	<b>CO4</b>	<b>CO5</b>	<b>Avg.</b>
C101/17MAT11	3.00	3.00	3.00	3.00	3.00	3.00
C102/17CHE12	3.00	3.00	3.00	3.00	3.00	3.00
C103/17PCD13	3.00	3.00	3.00	3.00	3.00	3.00
C104/17CED14	2.00	3.00	3.00	3.00	3.00	2.80
C105/17ELN15	1.20	2.10	2.10	2.10	2.10	1.92
C106/17CPL16	3.00	3.00	3.00	3.00	3.00	3.00
C107/17CHEL17	3.00	3.00	3.00	3.00	3.00	3.00
C108/17MAT21	3.00	3.00	3.00	3.00	3.00	3.00
C109/17PHY22	3.00	3.00	3.00	3.00	3.00	3.00
C110/17CIV23	3.00	3.00	3.00	3.00	3.00	3.00
C111/17EME24	3.00	3.00	3.00	3.00	3.00	3.00
C112/17ELE25	3.00	3.00	3.00	3.00	3.00	3.00
C113/17WSL26	3.00	3.00	3.00	3.00	3.00	3.00
C114/17PHYL27	3.00	3.00	3.00	3.00	3.00	3.00
C201/17MAT31	3.00	3.00	3.00	3.00	3.00	3.00
C202/17EC32	3.00	3.00	3.00	3.00	3.00	3.00
C203/17EC33	1.20	2.10	1.20	2.10	2.10	1.74
C204/17EC34	3.00	3.00	3.00	3.00	3.00	3.00
C205/17EC35	0.30	0.30	0.30	0.30	0.30	0.30
C206/17EC36	1.20	1.20	1.20	1.20	1.20	1.20
C207/17ECL37	3.00	3.00	3.00	3.00	3.00	3.00
C208/17ECL38	3.00	3.00	3.00	3.00	3.00	3.00
C209/17CPH39	3.00	3.00	3.00	3.00	3.00	3.00
C210/17MAT41	3.00	3.00	3.00	3.00	3.00	3.00
C211/17EC42	3.00	2.10	1.20	1.20	3.00	2.10
C212/17EC43	0.30	0.30	0.30	0.30	1.20	0.48
C213/17EC44	0.30	0.30	0.30	1.20	1.20	0.66
C214/17EC45	3.00	3.00	3.00	3.00	3.00	3.00



C215/17EC46	1.20	0.30	0.30	0.30	1.20	0.66
C216/17ECL47	3.00	3.00	3.00	3.00	3.00	3.00
C217/17ECL48	3.00	3.00	3.00	3.00	3.00	3.00
C218/17CPH49	1.20	1.20	1.20	1.20	1.20	1.20
C301/17ES51	3.00	3.00	3.00	3.00	3.00	3.00
C302/17EC52	1.20	0.30	1.20	1.20	1.20	1.02
C303/17EC53	3.00	3.00	3.00	3.00	3.00	3.00
C304/17EC54	3.00	3.00	3.00	3.00	3.00	3.00
C307/17ECL57	3.00	3.00	3.00	3.00	3.00	3.00
C308/17ECL58	3.00	3.00	3.00	3.00	3.00	3.00
C309/17EC61	2.10	1.20	2.10	2.10	2.10	1.92
C310/17EC62	1.20	0.30	2.10	2.10	2.10	1.56
C311/17EC63	0.30	0.30	1.20	1.20	1.20	0.84
C312/17EC64	1.20	0.30	2.10	1.20	1.20	1.20
C315/17ECL67	3.00	3.00	3.00	3.00	3.00	3.00
C316/17ECL68	3.00	3.00	3.00	3.00	3.00	3.00
C401/17EC71	1.20	2.10	2.10	0.30	0.30	1.20
C402/17EC72	3.00	3.00	3.00	2.10	0.30	2.28
C403/17EC73	2.10	1.20	1.20	0.30	0.30	1.02
C404/17EC744	2.10	2.10	2.10	1.20	0.30	1.56
C406/17ECL76	3.00	3.00	3.00	3.00	3.00	3.00
C407/17ECL77	3.00	3.00	3.00	3.00	3.00	3.00
C408/17ECP78	3.00	3.00	3.00	3.00	3.00	3.00
C409/17EC81	3.00	3.00	3.00	3.00	3.00	3.00
C410/17EC82	3.00	3.00	3.00	3.00	3.00	3.00
C412/17EC84	3.00	3.00	3.00	3.00	3.00	3.00
C413/17ECP85	3.00	3.00	3.00	3.00	3.00	3.00
C414/17ECS86	3.00	3.00	3.00	3.00	3.00	3.00



C304/17EC54	2.82	1.88	-	-	-	-	-	-	-	-	-	-
C307/17ECL57	3.00	2.00	1.00	-	3.00	-	-	1.00	2.00	2.00	-	-
C308/17ECL58	3.00	2.00	2.00	-	2.00	-	-	-	2.00	1.00	-	-
C309/17EC61	1.92	1.28	0.63	-	-	-	-	-	-	-	-	-
C310/17EC62	1.56	1.56	-	-	-	-	-	-	-	-	-	-
C311/17EC63	0.84	0.56	0.28	-	-	-	-	-	-	-	-	-
C312/17EC64	1.20	0.80	0.40	-	0.40	-	-	-	0.80	0.40	-	-
C315/17ECL67	2.07	2.93	1.93	1.00	2.00	-	-	-	2.00	2.00	-	-
C316/17ECL68	2.80	1.80	1.00	-	1.00	-	-	-	2.80	1.00	-	-
C401/17EC71	1.20	0.80	0.40	-	0.40	-	-	-	0.80	0.40	-	-
C402/17EC72	1.52	1.52	-	-	-	-	-	-	-	-	-	-
C403/17EC73	1.02	0.54	0.68	-	-	0.20	-	-	-	-	-	-
C404/17EC744	1.56	1.04	-	0.52	-	-	-	-	-	0.52	-	-
C406/17ECL76	3.00	2.00	2.00	2.00	1.60	-	-	1.00	2.00	2.00	-	-
C407/17ECL77	3.00	1.80	2.00	1.60	2.00	-	-	1.00	2.00	-	-	-
C408/17ECP78	1.00	2.00	2.00	1.00	-	1.00	1.00	2.00	3.00	3.00	2.00	2.80
C409/17EC81	3.00	2.00	-	-	-	-	-	-	-	-	-	-
C410/17EC82	2.00	2.00	-	-	-	-	-	-	-	-	-	-
C412/17EC84	3.00	3.00	2.00	2.00	1.00	2.00	1.00	1.00	3.00	3.00	1.87	2.00
C413/17ECP85	3.00	3.00	3.00	3.00	2.75	3.00	2.00	2.00	3.00	2.20	2.40	3.00
C414/17ECS86	2.00	2.00	2.00	-	-	1.00	1.00	-	2.00	3.00	-	2.00
Average(B)	2.27	1.74	1.30	1.41	1.54	1.42	1.50	1.43	1.81	1.42	1.85	1.57
Alumni Survey	3.00	3.00	3.00	3.00	3.00	3.00	3.00	3.00	3.00	3.00	3.00	3.00
Program exit Survey	3.00	3.00	3.00	3.00	3.00	3.00	3.00	3.00	3.00	3.00	3.00	3.00
Average(B)	3.00	3.00	3.00	3.00	3.00	3.00	3.00	3.00	3.00	3.00	3.00	3.00
A*0.8	1.82	1.40	1.04	1.13	1.23	1.13	1.20	1.15	1.45	1.14	1.48	1.26
B*0.2	0.60	0.60	0.60	0.60	0.60	0.60	0.60	0.60	0.60	0.60	0.60	0.60
Total Attainment	2.42	2.00	1.64	1.73	1.83	1.73	1.80	1.75	2.05	1.74	2.08	1.86

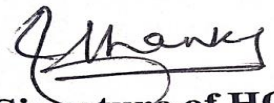
# K S INSTITUTE OF TECHNOLOGY, BENGALURU

## DEPARTMENT OF MECHANICAL ENGINEERING

### CO Attained Value 2017 - 2021 BATCH

SL NO	CODE	COURSE	CODE	CO1	CO2	CO3	CO4	CO5
1	C101	ENGINEERING MATHEMATICS I	17MAT11	3.00	3.00	3.00	3.00	3.00
2	C102	ENGINEERING PHYSICS	17PHY12	2.10	3.00	3.00	3.00	3.00
3	C103	ELEMENTS OF CIVIL ENGINEERING & ENGINEERING MECHANICS	17CIV13	3.00	3.00	3.00	3.00	3.00
4	C104	ELEMENTS OF MECHANICAL ENGINEERING	17EME14	0.30	1.20	0.30	0.30	0.30
5	C105	BASIC ELECTRICAL ENGINEERING	17ELE15	1.20	2.10	1.20	1.20	0.30
6	C106	WORKSHOP PRACTICE	17WSL16	3.00	3.00	3.00	3.00	3.00
7	C107	ENGINEERING PHYSICS LAB	17PHYL17	3.00	3.00	3.00	3.00	3.00
8	C108	ENGINEERING MATHEMATICS II	17MAT21	3.00	3.00	3.00	2.10	2.10
9	C109	ENGINEERING CHEMISTRY	17CHE22	3.00	3.00	3.00	3.00	3.00
10	C110	PROGRAMMING IN C & DATA STRUCTURE	17PCD23	0.30	1.20	0.30	0.30	0.30
11	C111	COMPUTER AIDED ENGINEERING DRAWING	17CED24	3.00	3.00	3.00	3.00	3.00
12	C112	BASIC ELECTRONICS	17ELN25	2.10	3.00	3.00	1.20	1.20
13	C113	COMPUTER PROGRAMMING LAB	17CPL26	3.00	3.00	3.00	3.00	3.00
14	C114	ENGINEERING CHEMISTRY LAB	17CHEL27	3.00	3.00	3.00	3.00	3.00
15	C201	ENGINEERING MATHEMATICS III	17MAT31	2.10	2.10	2.10	2.10	2.10
16	C202	MATERIALS SCIENCE	17ME32	3.00	3.00	3.00	3.00	3.00
17	C203	BASIC THERMODYNAMICS	17ME33	0.30	2.10	1.20	2.10	1.20
18	C204	MECHANICS OF MATERIALS	17ME34	2.10	2.10	0.30	2.10	2.10
19	C205	METAL CASTING & WELDING	17ME35A	0.30	0.30	0.30	2.10	0.30
20	C206	COMPUTER AIDED MACHINE DRAWING	17ME36A	3.00	3.00	3.00	3.00	3.00
21	C207	MATERIAL TESTING LAB	17MEL37A	3.00	3.00	3.00	3.00	3.00
22	C208	FOUNDRY AND FORGING LAB	17MEL38A	3.00	3.00	3.00	3.00	3.00
23	C209	ENGINEERING MATHEMATICS IV	17MAT41	3.00	3.00	3.00	3.00	3.00
24	C210	KINEMATICS OF MACHINERY	17ME42	1.20	1.20	1.20	1.20	1.20
25	C211	APPLIED THERMODYNAMICS	17ME43	0.30	0.30	0.30	2.10	3.00
26	C212	FLUID MECHANICS	17ME44	1.20	2.10	2.10	3.00	2.10
27	C213	MACHINE TOOLS AND OPERATION	17ME45B	0.30	2.10	0.30	0.30	2.10
28	C214	MECHANICAL MEASUREMENT & METROLOGY	17ME46B	2.10	2.10	2.10	3.00	3.00
29	C215	MECHANICAL MEASUREMENT & METROLOGY LAB	17MEL47B	3.00	3.00	3.00	3.00	3.00

30	C216	MACHINE SHOP	17MEL48B	3.00	3.00	3.00	3.00	3.00
31	C301	MANAGEMENT AND ENGINEERING ECONOMICS	17ME51	3.00	3.00	3.00	3.00	3.00
32	C302	DYNAMICS OF MACHINERY	17ME52	3.00	3.00	3.00	3.00	3.00
33	C303	TURBOMACHINES	17ME53	0.30	0.30	3.00	0.30	2.10
34	C304	DESIGN OF MACHINE ELEMENTS - I	17ME54	0.30	0.30	0.30	0.30	0.30
35	C305	NON TRADITIONAL MACHINING	17ME554	3.00	3.00	3.00	3.00	3.00
36	C306	ENERGY ENGINEERING	17ME562	3.00	3.00	3.00	3.00	3.00
37	C307	FLUID MECHANICS LAB	17MEL57	3.00	3.00	3.00	3.00	3.00
38	C308	ENERGY LAB	17MEL58	3.00	3.00	3.00	3.00	3.00
39	C309	FINITE ELEMENT ANALYSIS	17ME61	3.00	3.00	3.00	3.00	3.00
40	C310	COMPUTER INTEGRATED MANUFACTURING	17ME62	3.00	3.00	3.00	3.00	3.00
41	C311	HEAT TRANSFER	17ME63	3.00	3.00	3.00	3.00	3.00
42	C312	DESIGN OF MACHINE ELEMENTS II	17ME64	3.00	2.10	3.00	3.00	3.00
43	C313	AUTOMOBILE ENGINEERING	17ME655	3.00	3.00	3.00	3.00	3.00
44	C314	INDUSTRIAL SAFETY	17ME662	3.00	3.00	3.00	3.00	3.00
45	C315	HEAT TRANSFER LAB	17MEL67	3.00	3.00	3.00	3.00	3.00
46	C401	MODELING AND ANALYSIS LAB	17MEL68	3.00	3.00	3.00	3.00	3.00
47	C402	ENERGY ENGINEERING	17ME71	3.00	3.00	3.00	3.00	3.00
48	C403	FLUID POWER SYSTEM	17ME72	3.00	3.00	3.00	3.00	3.00
49	C404	CONTROL ENGINEERING	17ME73	3.00	3.00	3.00	3.00	3.00
50	C405	TRIBOLOGY	17ME742	3.00	3.00	3.00	3.00	3.00
51	C406	MECHATRONICS	17ME753	3.00	3.00	3.00	3.00	3.00
52	C407	DESIGN LAB	17MEL76	3.00	3.00	3.00	3.00	3.00
53	C408	CIM LAB	17MEL77	3.00	3.00	3.00	3.00	3.00
54	C409	PROJECT	17MEL78	3.00	3.00	3.00	3.00	3.00
55	C410	OPERATION RESEARCH	17ME81	3.00	3.00	3.00	3.00	3.00
56	C411	ADDITIVE MANUFACTURING	17ME82	3.00	3.00	3.00	3.00	3.00
57	C412	PRODUCT LIFE CYCLE MANAGEMENT	17ME835	3.00	3.00	3.00	3.00	3.00
58	C413	INTERNSHIP	17ME84	3.00	3.00	3.00	3.00	3.00
59	C414	PROJECT PHASE II	17ME85	3.00	3.00	3.00	3.00	3.00
60	C415	TECHNICAL SEMINAR	17MES86	3.00	3.00	3.00	3.00	3.00

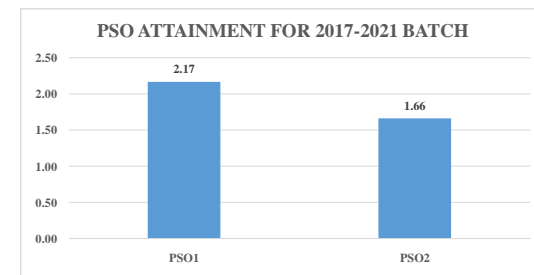
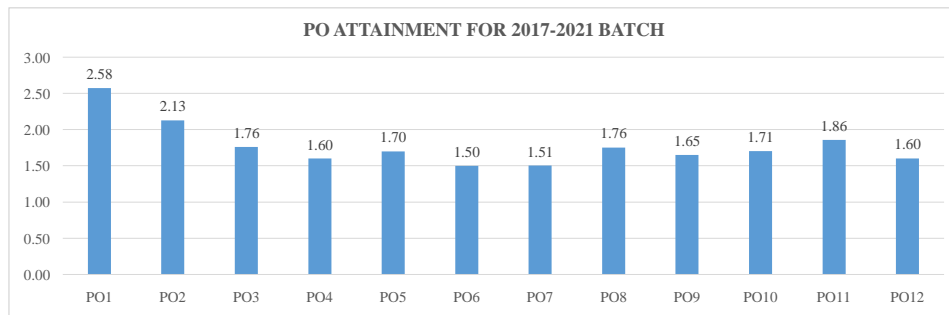
  
**Signature of HOD**  
 Head of the Department  
 Dept. of Mechanical Engg.  
 K.S. Institute of Technology  
 Bengaluru - 560 109

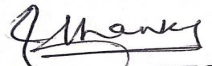
**K S INSTITUTE OF TECHNOLOGY, BENGALURU**  
**DEPARTMENT OF MECHANICAL ENGINEERING**  
**PO Attainment 2017 - 2021 BATCH**

SL.NO	CODE	COURSE	CODE	PO1	PO2	PO3	PO4	PO5	PO6	PO7	PO8	PO9	PO10	PO11	PO12	PSO1	PSO2
1	C101	ENGINEERING MATHEMATICS I	17MAT11	3.00	2.00	1.33	-	-	-	-	-	-	-	-	-	1.60	-
2	C102	ENGINEERING PHYSICS	17PHY12	2.62	2.28	2.14	-	-	1.70	2.00	-	-	-	-	1.88	1.80	-
3	C103	ELEMENTS OF CIVIL ENGINEERING & ENGINEERING MECHNICS	17CIV13	3.00	3.00	2.00	1.80	1.00	1.00	-	-	1.00	-	-	0.87	3.00	1.60
4	C104	ELEMENTS OF MECHANICAL ENGINEERING	17EME14	0.48	0.15	-	-	-	0.17	0.20	-	0.16	0.16	-	0.35	0.32	0.16
5	C105	BASIC ELECTRICAL ENGINEERING	17ELE15	1.06	0.66	-	-	-	0.55	-	-	-	-	-	-	0.40	-
6	C106	WORKSHOP PRACTICE	17WSL16	3.00	-	-	-	-	2.00	-	-	-	-	-	-	2.00	1.00
7	C107	ENGINEERING PHYSICS LAB	17PHYL17	3.00	2.00	2.00	1.00	1.00	1.00	-	-	1.00	-	-	0.93	2.00	-
8	C108	ENGINEERING MATHEMATICS II	17MAT21	2.64	1.90	1.56	-	-	-	-	-	-	-	-	-	1.56	-
9	C109	ENGINEERING CHEMISTRY	17CHE22	3.00	2.00	1.00	1.00	-	-	-	-	-	-	-	-	1.33	-
10	C110	PROGRAMMING IN C & DATA STRUCTURE	17PCD23	0.48	0.35	0.10	0.10	0.32	-	-	-	-	-	-	0.36	0.16	0.16
11	C111	COMPUTER AIDED ENGINEERING DRAWING	17CED24	2.80	2.20	1.40	1.40	-	-	-	-	1.00	1.00	-	0.93	1.00	1.00
12	C112	BASIC ELECTRONICS	17ELN25	2.02	1.40	2.10	-	-	1.76	1.56	-	0.70	1.48	0.78	2.10	1.32	-
13	C113	ENGINEERING CHEMISTRY LAB	17CPL26	3.00	1.00	3.00	-	-	-	-	-	-	-	-	-	1.00	-
14	C114	COMPUTER PROGRAMMING LAB	17CHEL27	3.00	2.20	2.00	1.00	3.00	-	-	-	-	-	-	1.87	2.00	2.00
15	C201	ENGINEERING MATHEMATICS III	17MAT31	2.10	1.40	1.40	0.70	0.70	0.70	-	-	0.70	-	-	0.70	0.70	0.70
16	C202	MATERIALS SCIENCE	17ME32	3.00	1.40	1.33	-	2.00	1.00	-	-	1.00	-	-	1.00	3.00	1.20
17	C203	BASIC THERMODYNAMICS	17ME33	3.00	2.00	2.00	1.00	1.00	1.00	-	-	-	-	-	1.00	3.00	1.00
18	C204	MECHANICS OF MATERIALS	17ME34	2.10	1.40	0.70	0.70	1.40	-	-	0.70	-	1.40	-	0.70	2.10	1.40
19	C205	METAL CASTING & WELDING	17ME35A	0.20	0.10	0.10	0.10	-	-	0.10	-	0.10	0.10	-	0.10	0.20	0.20
20	C206	COMPUTER AIDED MACHINE DRAWING	17ME36A	3.00	2.00	2.00	2.00	3.00	1.00	-	-	1.00	-	-	2.00	2.00	3.00
21	C207	MATERIAL TESTING LAB	17MEL37A	3.00	3.00	3.00	3.00	2.40	-	-	2.00	3.00	3.00	-	3.00	2.40	1.80
22	C208	FOUNDRY AND FORGING LAB	17MEL38A	3.00	2.00	-	1.00	-	-	-	-	3.00	1.00	-	-	2.00	2.00
23	C209	ENGINEERING MATHEMATICS IV	17MAT41	3.00	2.00	1.00	1.00	-	-	-	-	1.00	1.00	-	-	1.00	1.00
24	C210	KINEMATICS OF MACHINERY	17ME42	1.20	0.80	0.72	0.40	0.64	0.40	-	-	0.40	-	-	0.40	1.04	0.56
25	C211	APPLIED THERMODYNAMICS	17ME43	0.30	0.30	0.10	0.10	0.10	0.10	0.10	-	-	-	-	0.10	0.30	0.10
26	C212	FLUID MECHANICS	17ME44	2.10	2.10	1.40	1.40	0.70	0.70	-	-	-	-	-	1.40	1.40	0.70
27	C213	MACHINE TOOLS AND OPERATION	17ME45B	1.40	0.70	0.70	0.70	-	0.70	0.70	-	0.70	0.70	-	0.70	2.10	2.10
28	C214	MECHANICAL MEASUREMENT & METROLOGY	17ME46B	2.10	1.40	0.70	-	-	0.70	0.70	-	0.70	0.70	-	1.40	1.40	1.40
29	C215	MECHANICAL MEASUREMENT & METROLOGY LAB	17MEL47B	2.60	2.60	2.00	1.00	2.00	1.00	1.00	1.00	1.60	1.00	-	2.00	2.40	1.00
30	C216	MACHINE SHOP	17MEL48B	3.00	-	-	-	-	2.00	-	-	2.60	-	-	-	-	-
31	C301	MANAGEMENT AND ENGINEERING ECONOMICS	17ME51	1.00	2.67	-	1.40	-	1.00	1.00	1.00	3.00	1.80	2.40	1.40	1.00	1.80
32	C302	DYNAMICS OF MACHINERY	17ME52	3.00	2.80	1.60	1.40	-	-	-	-	1.00	-	-	-	2.00	1.00
33	C303	TURBOMACHINES	17ME53	1.20	1.20	0.80	0.40	0.40	0.48	-	-	-	-	-	0.40	1.20	0.40
34	C304	DESIGN OF MACHINE ELEMENTS - I	17ME54	0.30	0.22	0.20	0.20	0.10	0.16	0.20	0.20	-	-	-	0.10	0.22	0.20
35	C305	NON TRADITIONAL MACHINING	17ME554	3.00	2.00	2.00	-	-	-	1.00	1.00	3.00	2.00	-	2.00	2.20	2.00
36	C306	ENERGY ENGINEERING	17ME562	3.00	2.00	-	-	-	-	3.00	2.00	2.00	-	-	2.00	2.00	1.00
37	C307	FLUID MECHANICS LAB	17MEL57	3.00	2.40	1.00	1.67	1.00	-	-	-	1.00	-	-	1.00	2.00	1.00

38	C308	ENERGY LAB	17MEL58	3.00	3.00	1.00	1.00	1.00	1.00	1.00	1.00	1.00	1.00	1.00	1.00	1.00	1.00	1.00
39	C309	FINITE ELEMENT ANALYSIS	17ME61	3.00	3.00	2.00	1.00	1.00	1.00	1.00	1.00	1.00	1.00	1.00	1.00	1.00	1.00	1.00
40	C310	COMPUTER INTEGRATED MANUFACTURING	17ME62	2.00	2.00	1.00	1.00	1.00	1.00	1.00	1.00	1.00	1.00	1.00	1.00	1.00	1.00	1.00
41	C311	HEAT TRANSFER	17ME63	3.00	2.20	1.00	1.00	1.00	1.00	1.00	1.00	1.00	1.00	1.00	1.00	1.00	1.00	1.00
42	C312	DESIGN OF MACHINE ELEMENTS II	17ME64	2.82	2.82	2.08	1.48	1.00	2.00	1.00	0.94	1.00	1.00	1.00	1.00	1.00	1.00	1.00
43	C313	AUTOMOBILE ENGINEERING	17ME655	3.00	2.40	1.00	1.00	1.00	1.00	1.00	1.00	1.00	1.00	1.00	1.00	1.00	1.00	1.00
44	C314	INDUSTRIAL SAFETY	17ME662	3.00	3.00	1.00	1.00	1.00	1.00	1.00	1.00	1.00	1.00	1.00	1.00	1.00	1.00	1.00
45	C315	HEAT TRANSFER LAB	17MEL67	3.00	3.00	1.00	1.00	1.00	2.00	1.00	1.00	1.00	1.00	1.00	1.00	1.00	1.00	1.00
46	C401	MODELING AND ANALYSIS LAB	17MEL68	3.00	3.00	3.00	3.00	3.00	1.00	1.00	1.00	1.00	1.00	1.00	1.00	1.00	1.00	1.00
47	C402	ENERGY ENGINEERING	17ME71	3.00	2.00	1.60	1.00	1.00	1.40	1.00	1.00	1.00	1.00	1.00	1.00	1.00	1.00	1.00
48	C403	FLUID POWER SYSTEM	17ME72	3.00	3.00	2.00	1.00	1.00	1.00	1.00	1.00	1.00	1.00	1.00	1.00	1.00	1.00	1.00
49	C404	CONTROL ENGINEERING	17ME73	2.80	2.20	1.00	2.00	1.00	1.00	1.00	1.00	1.00	1.00	1.00	1.00	1.00	1.00	1.00
50	C405	TRIBOLOGY	17ME742	2.40	2.40	2.50	1.67	1.00	2.00	1.40	1.00	1.00	1.00	1.00	1.00	1.00	1.00	1.00
51	C406	MECHATRONICS	17ME742	3.00	2.00	1.00	1.00	1.00	1.00	1.00	1.00	1.00	1.00	1.00	1.00	1.00	1.00	1.00
52	C407	DESIGN LAB	17MEL76	3.00	1.00	1.00	1.00	1.00	1.20	1.00	1.00	1.00	1.00	1.00	1.00	1.00	1.00	1.00
53	C408	CIM LAB	17MEL77	2.60	2.60	2.00	2.00	1.00	1.00	1.33	1.00	1.60	1.00	1.20	2.00	2.40	1.00	1.00
54	C409	PROJECT	17MEL78	3.00	2.00	1.00	1.50	1.50	1.00	1.00	1.00	1.00	1.00	1.00	1.00	1.00	1.00	1.00
55	C410	OPERATION RESEARCH	17ME81	3.00	2.75	2.00	2.00	3.00	1.00	1.00	1.50	1.00	1.00	1.80	2.00	1.00	1.00	1.00
56	C411	ADDITIVE MANUFACTURING	17ME82	3.00	1.80	2.00	1.00	1.00	1.00	1.00	1.00	1.00	1.00	1.00	1.00	1.00	1.00	1.00
57	C412	PRODUCT LIFE CYCLE MANAGEMENT	17ME835	2.00	1.00	1.00	1.00	1.00	1.00	1.00	1.00	1.00	1.00	1.00	1.00	1.00	1.00	1.00
58	C413	INTERNSHIP	17ME84	3.00	2.00	1.00	2.00	1.80	2.00	1.60	2.00	2.00	3.00	2.00	2.00	3.00	2.00	2.20
59	C414	PROJECT PHASE II	17ME85	3.00	3.00	3.00	3.00	3.00	3.00	3.00	3.00	3.00	1.00	3.00	3.00	3.00	3.00	2.20
60	C415	TECHNICAL SEMINAR	17MES86	3.00	1.25	1.00	2.00	1.80	1.00	1.00	2.00	1.00	3.00	1.00	2.00	3.00	2.00	2.20

PO's	PO1	PO2	PO3	PO4	PO5	PO6	PO7	PO8	PO9	PO10	PO11	PO12	PSO1	PSO2
<b>DIRECT ATTAINMENT(A)</b>	2.47	1.91	1.45	1.25	1.38	1.13	1.13	1.45	1.31	1.38	1.58	1.25	1.96	1.33
PROGRAM EXIT SURVEY	3.00	3.00	3.00	3.00	3.00	3.00	3.00	3.00	3.00	3.00	3.00	3.00	3.00	3.00
ALUMNI SURVEY	3.00	3.00	3.00	3.00	3.00	3.00	3.00	3.00	3.00	3.00	3.00	3.00	3.00	3.00
<b>INDIRECT ATTAINMENT(B)</b>	3.00	3.00	3.00	3.00	3.00	3.00	3.00	3.00	3.00	3.00	3.00	3.00	3.00	3.00
<b>C = 0.8*A</b>	1.98	1.53	1.16	1.00	1.10	0.90	0.91	1.16	1.05	1.11	1.26	1.00	1.57	1.06
<b>D = 0.2*B</b>	0.60	0.60	0.60	0.60	0.60	0.60	0.60	0.60	0.60	0.60	0.60	0.60	0.60	0.60
<b>TOTAL PO ATTAINMENT (2017-2021)</b>	2.58	2.13	1.76	1.60	1.70	1.50	1.51	1.76	1.65	1.71	1.86	1.60	2.17	1.66



  
**Signature of HOD**  
 Head of the Department  
 Dept. of Mechanical Engg.  
 K.S. Institute of Technology  
 Bengaluru - 560 109