



Kammavari Sangham ® 1952  
K.S.GROUP OF INSTITUTIONS  
ಕೆ.ಎಸ್. ಕಾಂಗ್ರೆಸ್ ಮಹಾದಿವ್ಯಾಲಯ



# K.S.INSTITUTE OF TECHNOLOGY

(Approved by AICTE, New Delhi & Affiliated to VTU, Belgaum)

#14, Raghuvanahalli, Kanakapura Road, Bangalore - 560 062.

Tel : +91 80 28435722 \ 724, Fax : +91 80 28435723 www.ksit.ac.in

To,  
Hiriyanniah H.M,  
Chief Executive Officer,  
Thoughtnet Technologies (I) Pvt. Ltd.  
No.202, 2nd Floor, "Brigade Corner" Kanakapura road,  
Yedyur Circle, 7th Block, Jayanagar, Bangalore-560 082.  
**Landmark:** Above Bata Showroom

Date: 25<sup>th</sup> June 2015

Dear Sir,

**Subject:** Release of Work Order for the order reference No. TNET-KSIT-01-2015/16.

ORDER FORM									
Effective Date	25.06.2015 to 24.06.2018				Order Reference No.		TNET- KSIT-01-2015/16		
Company Name	K. S. Institute of Technology								
Registered Address	No.14, Raghuvanahalli, Kanakapura Main Road, Bangalore - 560062				Phone	080-28427162	Fax	-NA-	
Billing Address	No.14, Raghuvanahalli, Kanakapura Main Road, Bangalore - 560062				Phone	080-28427163	Fax	-NA-	
Type of Institution	K12	K12 CBSE	K12 ICSE	K12 State	Pre-School	Pre-University	Vocational Training	Higher Education	All
Primary Contact	Dr. T.V. Govindaraju				Designation	Principal, Member Secretary		Department	Management
E-Mail	Principal.ksit@gmail.com				Telephone	080-32495397		Mobile	9663778001
Secondary Contact	-NA-				Designation	-NA-		Department	-NA-
E-Mail	-NA-				Telephone	-NA-		Mobile	-NA-
PRODUCT / SERVICE DESCRIPTION									
Modules / Features / Technical Specifications					Benefits of PupilNBA Reporting Platform				
Student Information Management Staff Information Management Parent Information Course and Curriculum Management Attendance Management Test and Examination Library Management Interaction using SMS Reports Alumni Management					Comprehensive NBA reporting solution Automation of Record Files related to Evidences of performances of Students, Staff and Outcome based education Automate the Report Generation Process as per NBA guidelines Capture, Manage and use information for operations Reduce Duplication Efforts Enable Centralized and Common dashboards for all the stakeholders of the Institution Effortless communication with all stakeholders of the Institution				

son/Alc  
File  
9/30.6.15

Received with thanks  
Hijm

26.6.2015  
PRINCIPAL  
K.S. INSTITUTE OF TECHNOLOGY  
BANGALORE-560 062.

27/6/15



Kammavari Sangham ® 1952  
K.S.GROUP OF INSTITUTIONS  
ಕೆ.ಎಸ್. ಕಾಂತ್ರಿಕ ಸುಹಾಸಿದಯ  
**K.S.INSTITUTE OF TECHNOLOGY**  
(Approved by AICTE, New Delhi & Affiliated to VTU, Belgaum)



#14, Raghuvanahalli, Kanakapura Road, Bangalore - 560 062.  
Tel : +91 80 28435722 \ 724, Fax : +91 80 28435723 www.ksit.ac.in

Subject to the Terms of Service, the Customer agrees to pay the service charges based on the following tariffs to ThoughtNet Technologies (India) Pvt Ltd.

Item	Per	Frequency	Tariff
Service Subscription for Pupilpod	Student	Monthly	Rs. 20
SMS Bundle of 100	SMS	Yearly	Rs. 0
Additional Per SMS Charges	SMS		Rs. 0.50
Data Entry – Offsite (If Any)	Per Man Day	Per Instance	Rs. 750 (Waived Off)
Minimum Credit Limit		30 Days	
Maximum credit Limit		90 Days	
<b>Terms &amp; Conditions For Pupilpod</b> <ul style="list-style-type: none"><li>Invoices will be raised at the end of the each Month and the payments shall be remitted via DD, Cheque or an online transfer.</li><li>Invoices will be payable within 15 days from the date of submission. Late payments are subject to Late Charges of 5%.</li><li>SMS's will be billed on actual usage based on completion of each Month of the year.</li><li>Service Taxes and other taxes are applicable as regulated by the Government. They will be added to the invoice.</li></ul>			
Authorised Signatory for K S. Institute of Technology			

Signature :

NAME :

DATE :

Dr. T.V. Govindaraju

PRINCIPAL  
K.S.INSTITUTE OF TECHNOLOGY  
BANGALORE-560 062.

26.6.2015

Received With Thanks  
Htm



# ORDER FORM

Effective Date	25.06.2015 to 24.06.2018		Order Reference No.	TNET- KSIT-01-2015/16					
Company Name	K. S. Institute of Technology								
Registered Address	No.14, Raghuvanahalli, Kanakapura Main Road, Bangalore - 560062		Phone	080-28427162	Fax -NA-				
Billing Address	No.14, Raghuvanahalli, Kanakapura Main Road, Bangalore - 560062		Phone	080-28427163	Fax -NA-				
Type of Institution	K12	K12 CBSE	K12 ICSE	K12 State	Pre-School	Pre-University	Vocational Training	Higher Education	All
Primary Contact	Dr. T.V. Govindaraju			Designation	Principal, Member Secretary		Department	Management	
E-Mail	Principal.ksit@gmail.com			Telephone	080-32495397		Mobile	9663778001	
Secondary Contact	-NA-			Designation	-NA-		Department	-NA-	
E-Mail	-NA-			Telephone	-NA-		Mobile	-NA-	

## PRODUCT / SERVICE DESCRIPTION

### Modules / Features / Technical Specifications

Student Information Management  
Staff Information Management  
Parent Information  
Course and Curriculum Management  
Attendance Management  
Test and Examination  
Library Management  
Interaction using SMS  
Reports  
Alumni Management

### Benefits of PupilNBA Reporting Platform

Comprehensive NBA reporting solution  
Automation of Record Files related to Evidences of performances of Students, Staff and Outcome based education  
Automate the Report Generation Process as per NBA guidelines  
Capture, Manage and use information for operations  
Reduce Duplication Efforts  
Enable Centralized and Common dashboards for all the stakeholders of the Institution  
Effortless communication with all stakeholders of the Institution

Subject to the Terms of Service, the Customer agrees to pay the service charges based on the following tariffs to ThoughtNet Technologies (India) Pvt Ltd.

Item	Per	Frequency	Tariff
Service Subscription for Pupilpod	Student	Monthly	Rs. 20
SMS Bundle of 100	SMS	Yearly	Rs. 0
Additional Per SMS Charges	SMS		Rs. 0.50
Data Entry - Offsite (If Any)	Per Man Day	Per Instance	Rs. 750 (Waived Off)
Minimum Credit Limit		30 Days	
Maximum credit Limit		90 Days	

### Terms & Conditions For Pupilpod

- Invoices will be raised at the end of the each Month and the payments shall be remitted via DD, Cheque or an online transfer.
- Invoices will be payable within 15 days from the date of submission. Late payments are subject to Late Charges of 5%.
- SMS's will be billed on actual usage based on completion of each Month of the year.
- Service Taxes and other taxes are applicable as regulated by the Government. They will be added to the invoice.

Authorised Signatory for K S. Institute of Technology

Signature :

NAME :

DATE :

Go the provided / secretary  
for permission to issue  
work order.  
24.6.15

Permitted to  
issue work order.  
K.V. Nigam  
24/6/15

## Undertaking for SMS to registered Subscribers (as per TRAI Regulations)

This agreement ("Agreement") is made and entered into on 29<sup>th</sup> June 2015 ("Execution Date") by and between:

1. K.S. Institute of Technology, Bangalore AND
2. Thoughtnet Technologies (India) Pvt. Ltd

We hereby undertake that:

1. K.S. Institute of Technology represents The Principal and Staff who are using PupilPod software.
2. We have subscribed to send transactional SMS through Pupilpod, under the "Registered Educational Institute" category and will be sending messages to our parents/guardians/students/staff only and relating to the institution only.
3. We shall make a continuous effort to strictly comply with the applicable Telecom Regulatory Authority of India rules and regulations ("TRAI Regulations") in force including but not limited to regulations applicable for the National Customer Preference Registry ("NCPR") commercial communications and for the content of the SMS Messages.
4. We shall strictly comply with TRAI Regulations applicable to the SMS Messages as stated in the below points.
  - a) Any virus and malicious code that might disrupt, disable, harm, erase memory of, or otherwise impede operations, or functions of any software, hardware, wireless device, computer or any network.
  - b) Any vulgar, obscene content, adverse, offensive / derogatory reference to (i) corporations or brands; (ii) any personality, living or dead; (iii) communities, living or extinct; (iv) to any city, building, geographical feature, etc. that can be singularly / uniquely identified in the world; (v) gender and (vi) physical / racial attributes.
  - c) Any content, which is lascivious or appeals to the prurient interest or the effect whereof, is such as to tend to deprave or corrupt any person.
  - d) Any content, the presentation, dissemination or disclosure whereof, infringes any intellectual property right or confidentiality obligation.
  - e) Any content which declares to be opposed to standards of morality or decency, or to be opposed to public policy or any adverse, offensive / derogatory reference to any companies, organizations, religious associations, political parties, governments (state and central), anyone's private life, any other commercial and non-commercial entities.





**MANVISH**  
eTech Pvt. Ltd.,

Date: 08-08-2013

To,  
The Secretary  
Kamavarisangam  
Bangalore

Dear Sir,

Sub: - Proposal for Manvish Web enabled Campus Automation systems

We are glad to submit the proposal for supplying, installing and commissioning of biometric based attendance management system for K S Group of Institutions. We hope that the systems are in line with your requirements.

Thanking You,

For Manvish eTech Private Limited

**Supreeth Prakash**  
Asst. Manager, Operations

## **Table of Contents:**

- 1. Introduction**
- 2. Advantages of MiFaun Biometric Devices over other conventional Biometric devices**
- 3. Deployment scenario in K S GROUP OF INSTITUTIONS**
- 4. Technical Specification of a MiFaun Device**
- 5. Server software features**
- 6. Investment Schedule**
- 7. Roles & Responsibility & Implementation Process**
- 8. Training, Installation & Support**
- 9. General Terms and Conditions**
- 10. About Manvish eTech Pvt Ltd**
- 11. References**



## **1. Introduction:**

Finger print is a distinct identification for EVERY person. It is universal, and since decades finger print is used for authentication during verification.

**MiFaun-Workforce management system** is an embedded Biometric application for authentication, time attendance monitoring.

Biometrics links events to individuals. This is convenient, accurate, and is socially accepted.

**MiFaun** is a secure access system and comes with feature rich web enabled software. It supports User ID with password and Finger print or smart card during verification for access control.

**Radio-frequency identification (RFID)** (optional) is the use of a wireless non-contact system that uses radio-frequency electromagnetic fields to transfer data from a tag attached to an object, for the purposes of automatic identification.

The mifaun biometric attendance system can be integrated to SIS. (Optional)

## **2. The numerous advantages of MiFaun biometric devices over other conventional biometric devices in the market are as follows:**

- 1) **User friendly color LCD display, option to display color photographs of the Employees:**  
Unlike ordinary biometric devices, which displays single line monochrome display, MiFaun devices can display color photographs, which gives a better feel to the user.
- 2) **IP enabled, directly connects to the internet without the need of a local PC:**  
This gives the advantage of connecting the devices directly to the internet without the need of a PC or any other media in between, therefore any scope for tampering the data is ruled out, data will be secure and the entire system will be tamper proof.
- 3) **All the devices can be connected to the central server through GPRS / WIFI / LAN, and can be monitored remotely:**  
In an ordinary biometric device, direct connection between the devices and the central server is not possible without a local PC, but in MiFaun device, remote connectivity to the central server is possible through various means of communication like GPRS / WIFI / LAN.
- 4) **Automatic synchronization with the central server:**  
MiFaun devices are connected to the central server and the devices are synchronized automatically. For every fixed interval of time, the data captured on the MiFaun device will be automatically pushed into the central server. Therefore the end user/decision making authority can see the data on a real time basis. Even if the internet connection is down, the data will be stored in the device memory, and will be pushed to the central server automatically when the connection resumes.



- 5) **Reports can be seen by the authority from anywhere in the world:**  
The data captured and reports generated can be seen/monitored by the concerned authority from anywhere in the world. The data can be seen just by logging into a website.
- 6) **Data encryption:**  
The data captured is encrypted using secure algorithm; hence there will be no scope for data interpretation in between the devices and server. This wipes out any room for data manipulation.
- 7) **Large memory capacity:**  
MiFaun devices comes with large storage capacity, expandable up to 2GB, therefore months of transactions can be stored in the device.
- 8) **16 keys alpha numeric mobile type keypad:**  
This enables the users to type in their ID with convenience. Unlike other ordinary biometric devices which are only number based, MiFaun comes with an alpha numeric keypad, therefore both names and numbers can be typed with ease.
- 9) **Menu driven:**  
Unlike ordinary biometric devices MiFaun biometric devices has a large color LCD display, it is user friendly and menu driven. Whereas other biometric devices depends on function keys, in which functions/policies are limited to the number of function keys present in the device.
- 10) **Excellent Battery backup:**  
MiFaun devices has an inbuilt rechargeable lithium battery, this can provide backup up to 8 hours. When the power goes, the device operates on the inbuilt battery backup. The battery charges automatically when the power resumes.
- 11) **Regional Language Support:**  
MiFaun Biometric Device supports Regional Indian Language Kannada. This enables the people of all categories to read the contents in the display screen.
- 12) **Flexible Shift Operation:**  
MiFaun Biometric Device can operate in flexible shift timings. This enables the organization to generate reports based on the shift basis.
- 13) **Flexible Overtime Calculation:**  
Mifaun Biometric device can provide overtime calculations, if required with round off option.
- 14) **Employee Leave Configuration:**  
Mifaun Biometric device software comes with default leave configuration module which enables you to schedule leaves and OOD of each employee in your organization.
- 15) **Payroll Report:**  
The above mentioned features enable the software to provide a final payroll report mentioning important details such as number of days present, PL, CL, SL etc for the current month. The report is intended to be uploaded to the company's payroll package.



**16) Cost Effective:**

With our vast experience in the field of embedded system for more than a decade we have our own in house design, manufacturing, assembly infrastructure and manpower. We are the original equipment manufacturers of the product we deliver (**made in India**), this provides our customer great value for money in terms of technology. This eliminates any third party or related commercial escalations to the cost of product and services.

**17) Software:**

We have the core competence to provide software's for our entire product line and can customize it to client's requirements within the scope of the project. We ensure the continuity of the software life cycle with regular support and updates.

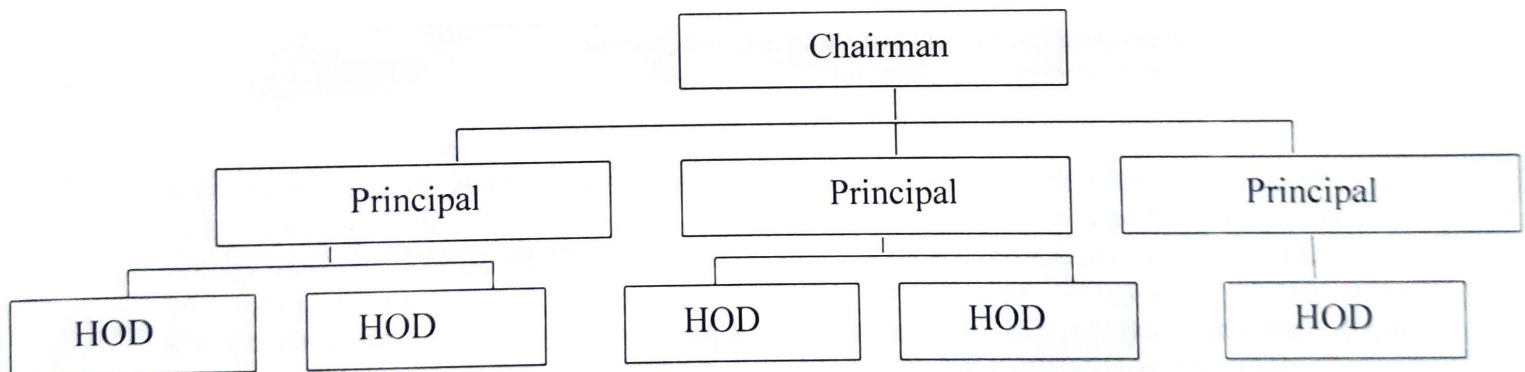
**18) Web Enabled Application:**

With the provision of static IP to the server the software can be launched on to the internet medium. Concerned managers can access reports on a daily basis through internet irrespective of the location.

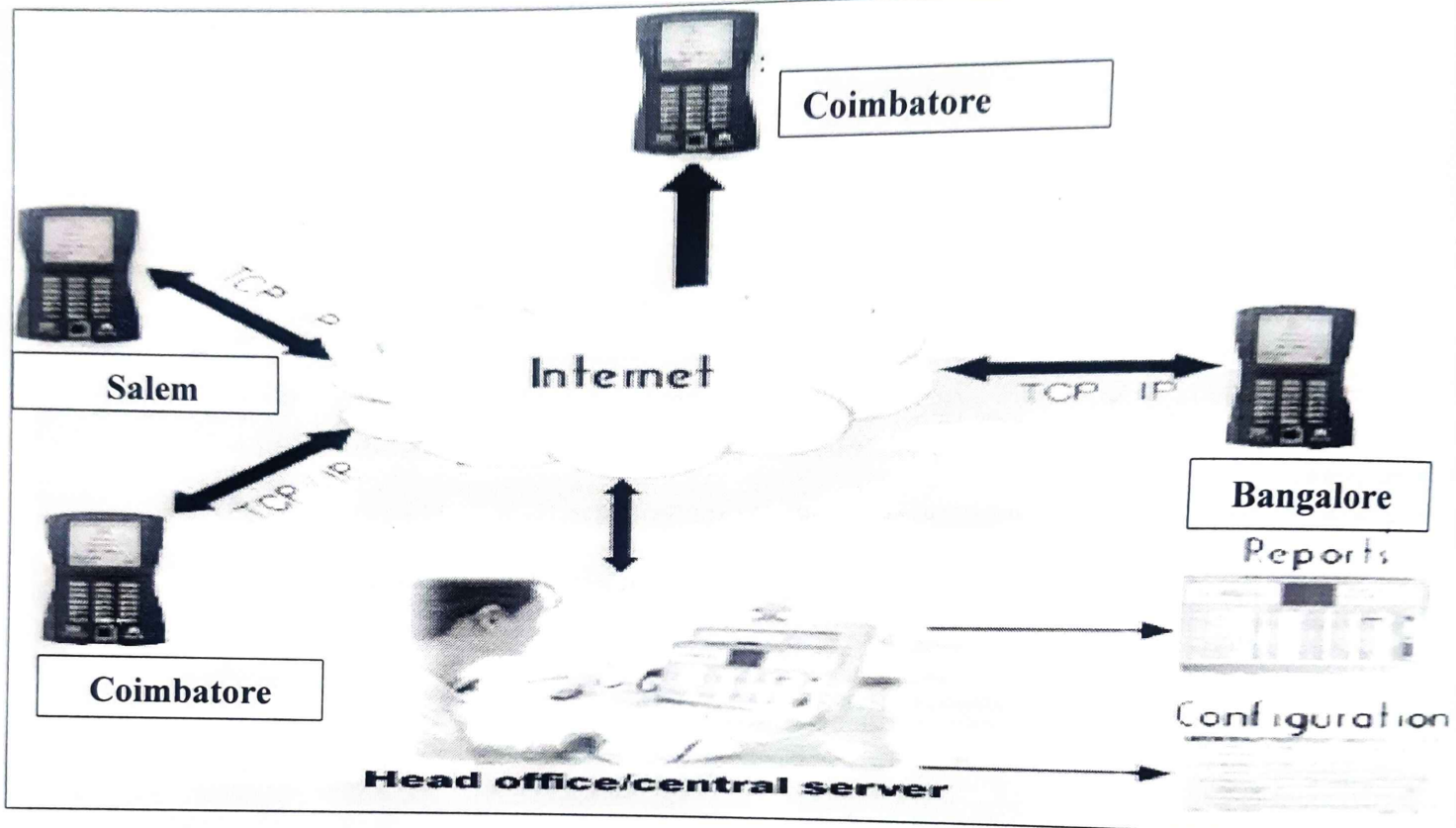
**19) Hierarchal Architecture for abstraction of information:**

The software architecture allows the data to be accessed only by the concerned person. The hierarchal structure helps in dividing the work of monitoring the report at various levels.

**Hierarchal Structure:**



### 3. Deployment scenario for K S GROUP OF INSTITUTIONS:



The Offices are located in the remote locations anywhere in India; MiFaun biometric devices are installed in every office or ward. These devices are connected to the central server via GPRS or TCP/IP Connection, as applicable. The data captured on every device will be sent to the central server, and the same can be seen over the internet. The reports can be seen over the internet by different concerned person. Since the devices are directly connected to the central server there is no room for tampering the data in between.

### 4. Technical specifications of the MiFaun Biometric device

Descriptions	Specification
CPU	32 Bit RISC CPU
Storage memory	up to 2GB
Memory	128 MB RAM (Upgradable)
Template capacity	50,000 expandable up to 100,000. Option to capture any number of Fingerprint per person
Sensor	500dpi Optical Sensor with Scratch Resistance



<b>Matching speed: &gt;FRR/FAR: 0.1% / 0.001</b>	Less than 2 seconds
<b>Identification</b>	1:1 and 1: N:
<b>Indicators</b>	Low battery, Battery full, Power on
<b>Display</b>	TFT Color Graphics LCD screen Options to display Employee Photograph in color
<b>Connectivity</b>	10/100Mbps, LAN/WAN, Internet
<b>Web features</b>	IP enabled direct interface to Internet without PC Directly connects to internet without PC
<b>Keypad:</b>	Mobile type alpha numeric keypad with Function keys
<b>Multi-lingual</b>	Regional language like Tamil supported in the device
<b>Key Quantity:</b>	Mobile Type Alphanumeric Keypad with Function keys / Arrow Keys
<b>Battery</b>	Lithium-ion battery, chargeable, 8 hours Backup
<b>Multi Authentication mode</b>	Biometrics only / Biometrics + Keypad / Keypad only
<b>Auto sync</b>	Automatic sync with the central server, even if the communication with the central server breaks data shall be transmitted automatically when the communication resumes
<b>Remote Operation</b>	Trouble Shooting & Remote Fingerprint template transfer
<b>Operation temperature</b>	-5 to 55 degree Celsius

## 5. Server Software features

This software will be running on the central server to synchronize the activities simultaneously with all the live MiFaun Biometric devices running on the network. Some of the major features/functionality are

- Web-server System will be synchronized with MiFAUN.
- In the event of disruption of communication between MiFAUN device and web-server, data will be stored in the MiFAUN device until the first opportunity of communication is established upon which all accumulated data will be transmitted to the server.
- It is totally web enabled software accessible from anywhere through Internet using browser
- It supports multiple logins for administering the activities through Internet using login, password and/or biometric with the concept of dashboard with more than 5 different levels as defined from macro to micro operations
- It supports the communication through LAN, WAN, internet.
- It supports data migration to other application software and/or database

- It supports the continuity in data transfer between MiFAUN devices and server in case if any network failure for certain period (Data will not be lost)
- It supports data upload and download operations.
- Maintains data including person information, Fingerprints and Photographs.
- Data upload and download with MiFAUN device
- Configuration of data based on the area to download automatically to MiFAUN devices for authentication
- Day to day attendance upload and management of data from all MiFAUN devices
- Synchronization of data between web-Server and MiFaun devices
- Remote monitoring of MiFaun devices for their day to day functionality
- Remote configuration for controlling the devices (Like activate, deactivate, change time and clock, set operation time, disable operator, enable operator etc.,)
- Data integration facilities for Payroll or other legacy systems
- Automatic emailing of reports to concerned authorities, on schedule.
- Full-fledged, leave management, attendance policy management, shift management,. Etc.
- Supports transactional database interface
- The software is operational on Red Hat Linux OS in the server
- Customization of reports
- Reports can be exported to the following formats
  - Excel
  - PDF
  - MS-Word
  - CSV
  - XML



## 6. Quotation:

Sl No:	Item	Unit price (Rs.)
1.	<b>Computer Terminal (Mifaun)</b> <b>Technical Specifications:</b> <ul style="list-style-type: none"> <li>• 2.8" Color LCD display</li> <li>• Sensor: 500 dpi Optical sensor</li> <li>• Matching mode: 1:1 or 1:N</li> <li>• Identification indication: Audio beep, message display</li> <li>• TCP/IP Communication</li> <li>• In built Battery Backup</li> <li>• Operating temperature: 0 degree C to 55 degree C</li> <li>• Operating humidity: 20%-80%</li> </ul>	23,500
2.	<b>Software:</b> <ul style="list-style-type: none"> <li>• Server Mifaun software</li> <li>• Mifaun handheld computing device application software</li> </ul>	-
3.	<b>Project Implementation: Option 2 – Knowledge transfer, Training &amp; installation in branch offices of K S GROUP OF INSTITUTIONS</b> <ul style="list-style-type: none"> <li>• Installation of devices in respective branch offices</li> <li>• Training on the device usage like registering fingerprint, configuring IP address.</li> <li>• Training on software usage</li> <li>• Sample finger print registration &amp; photo capture</li> </ul>	-

**\*Note: The above prices mentioned are exclusive of taxes.**

### Optional:

- |                           |         |
|---------------------------|---------|
| 1. <b>Inbuilt Camera:</b> | Rs 2500 |
| 2. <b>GPRS:</b>           | Rs 3000 |
| 3. <b>Wifi:</b>           | Rs 2000 |
| 4. <b>RFID:</b>           | Rs 1500 |

**5. Thin RFID Cards: Rs 200/Piece**

- Tag Holder
- Color Print
- Tag

**Note:** The above mentioned optional features costs are additional to the specified unit price and exclusive of tax.

## **7. Roles & Responsibilities and Implementation Process:**

### **A. Implementation Process:**

**K S Group of Institutions shall provide the following: -**

1. Quad -PROCESSOR SERVER WITH 8 GB RAM (2 No's)
2. 500 GB HDD (SCSI) or as appropriate
3. 10/100 Mbps Ethernet card
4. Back-Up hard disk of 500GB Preferably another system otherwise (For archiving & backup creations)
5. Windows Server OS / Red Hat OS
6. Web servers- JRUN ver 4.0 or latest
7. MySQL Database
8. Protection from virus and power outages
9. LAN / WAN with 10/100 mbps(to operate within campus)
10. Static IP (For internet access and web support to Manvish development team)
11. Printer (As applicable)
12. Web-Cam for photo-capture.
13. Uninterrupted power supply and virus protection for server
14. Protection to the biometric devices.
15. Ensuring all the employees assemble at a point for fingerprint registration.
16. Provide employee data with relevant data fields like name, age, dob, address, etc.,
17. Ensure updated employee data are provided.
18. Provide all necessary information for the data and report generation.
19. Each branch/biometric device may have access to
  - Power supply
  - Broadband internet connection



Sl.No	Work	Manvish eTech	K S GROUP OF INSTITUTIONS
1	Proposal Submission	YES – Prepared & submitted as per the solution requirements of K S GROUP OF INSTITUTIONS.	Inputs provided to Manvish eTech
2	Work Order Release & advance payment		YES – Work order shall be released as per the terms in proposal & mutual discussions.
3	Equipment Supply	YES – Shall be supplied as per the specifications mentioned in the Proposal	
4	Software-Hardware communication	YES-Shall be configured	YES-Shall assist Manvish eTech by providing IP address, network details etc.,
5	Employees Data Entry & Photo Upload	Shall upload data, data to be provided in the format specified	Data shall be provided in Excel / CSV format
6	Electric & LAN cabling		Shall be taken care by K S GROUP OF INSTITUTIONS
7	Finger print Capturing & Registration	Registration shall be done.	K S GROUP OF INSTITUTIONS shall assemble all its employees in a single location on a pre-decided date and location for registration.
8	Knowledge Transfer & Training	YES – KT will be done to the designated people	YES – Shall depute capable people for Knowledge transfer & training on the system usage.
9.	Point of Contact & Co-ordination	YES – Shall depute an Account Manager who shall be responsible for all co-ordination activities from Manvish eTech	YES – Shall depute a capable technical person who shall assist Manvish eTech in implementation, information & other co-ordination activities.

## **8. Training, Installation and support:**

MIFAUN solution is designed in a manner that it is easy for operations and installation. Training on the entire solution will be provided at the time of installation to local in-charge, for one time.

Any support related issue will be addressed over through the remote desktop support. Biometric device support will be addressed through remote access facility from Coimbatore. Any problem beyond the rectification through the remote support, following actions can be taken place upon the directions from K S GROUP OF INSTITUTIONS: -

Malfunctioning devices can be brought back to the head office & a spare device can be dispatched in the meanwhile.

## **9. General terms and conditions of sale:**

### **PART 1 - Services:**

1. This quotation is valid for 30 days & applicable only for R V EDUCATION TRUST BANGALORE
2. Upon the release of Work order, R V EDUCATION TRUST BANGALORE will enter into an agreement also outlining the service levels, with Manvish eTech Pvt Ltd for a period of 3 years or more for the services mentioned as above.
3. Customization is limited to the reports.
4. Commercials for customizations anything other than the reports will be calculated as per the efforts involved.
5. Any applicable taxes shall be extra.
6. Purchase Order and payments may kindly be placed in the name of "Manvish eTech Pvt Ltd", #78, Elephant Rock Road, 5<sup>th</sup> Main Road, Jayanagar 3<sup>rd</sup> Block, Bangalore 560011
7. Services and time-lines.: Upon receipt of the PO Manvish eTech engineer will assess the nature and volume of work and provide the information needed with time-lines for operations.
8. This document shall be governed and construed in accordance with the laws of the Republic of India and shall come under the appropriate court laws in Bangalore city
9. All Government of India as well as international norms and licensing policies applicable to the sale of proprietary software is applicable to this agreement.

### **PART 2 - Hardware:**

1. Device warranty: 1 year from the date of delivery
2. Payment mode: DD/Cheque/ e-Payment in the favour of Manvish eTech Pvt Ltd
3. Delivery: 4 – 6 weeks from the date of issue of P.O.
4. Warranty is not applicable for wearable parts like sensor and battery.
5. VAT / Service Tax / Any applicable taxes / cess / duties shall be applicable at the time of billing.
6. R V EDUCATION TRUST BANGALORE shall provide necessary Electric points, LAN Points & related cabling works.
7. Payment terms:
  - Hardware & Software: 50% Advance along with the work order & the balance upon the supply of the Hardware & Installation of the software
  - Managed Services: Payable on a monthly basis, within 15 days from the date of receipt of Invoice



## **10. ABOUT MANVISH ETECH PVT LTD:**

Manvish eTech Private Limited started operations in 1999 by technocrats who have been in the embedded engineering, networking and development field for the past 14 years.

As a focused embedded engineering company Manvish has pioneered several products in the embedded field such as multi-functional hand-held devices, remote diagnostics and web-enabled internet-edge devices.

Manvish has also pioneered the concept of complete campus-wide ERP automation solutions for educational institutions in the year 2000 and have experience in design and handling very high data and user traffic securely, for over 6 years. Manvish also sets up complete lab infrastructure for industry and education for embedded systems training and development. Also as recognition of our in-house ability to design products, Freescale Semiconductors have awarded us a Design Alliance Partner status.

### **Manvish owns the IP rights of all its products**

#### **What are the benefits to you as a user?**

- a. This implies that a high degree of customization with respect cost-volume-features, form factor and applications is possible.
- b. High reliability design and easy maintenance. Design incorporates remote diagnostics and application porting.
- c. Easy replacement.

*Force Majeure Clauses: Due to circumstances beyond the control of Manvish, Manvish will be indemnified against any schedule lapses/delays etc., due to foreseen and unforeseen circumstances. In where it is possible to predict and anticipate foreseen delays Manvish will keep customer informed of the same. Manvish will not be held liable for any consequences arising out of inability of the customer to use, deploy the supplied goods.*

## **11. References: (partial list)**

- \* **Bruhat Bengaluru Mahanagara Palike (BBMP):** Biometric based Workforce management system is used to manage the work force. Covers more than 10,000 Employees of various types like officers, drivers, sweepers etc.,
- \* **Karnataka Handloom Development Corporation (KHDC):** Biometric based Workforce management system is used to manage the work force.
- \* **Karnataka State Finance Corporation (KSFC):** Biometric Based Time Attendance installed in all the branch offices spread over the entire state of Karnataka. All the units are connected to a centralized server for data gathering, operations & monitoring.



Kammavari Sangham ® 1952  
K.S.GROUP OF INSTITUTIONS  
ಕ.ಎಸ್. ಕಾಂಗ್ರೆಸ್ ಮಹಾವಿದ್ಯಾಲಯ  
**K.S.INSTITUTE OF TECHNOLOGY**  
(Approved by AICTE, New Delhi & Affiliated to VTU, Belgaum)  
#14, Raghuvanahalli, Kanakapura Road, Bangalore - 560 062.  
Tel : +91 80 28435722 \ 724, Fax : +91 80 28435723 www.ksit.ac.in



Date: 12.11.2013

## Certificate

### Successful Installation & Working of Mifaun Biometric

### Units by Manvish eTech Pvt Ltd

This is to certify that the Biometric System has been installed in our KSIT campus at designated locations & is working satisfactorily. The devices are installed as per the specification.

The device has been successfully connected to the server in the KSIT campus & data exchange is functioning.

Signature: .....

*[Handwritten Signature]*  
12.11.13

Date: 12.11.2013

Received  
*[Handwritten Signature]*  
12/11/13





Kammavari Sangham ® 1952  
K.S.GROUP OF INSTITUTIONS  
ಕೆ.ಎಸ್. ಕಾಂಗ್ರೆಸ್ ದುಹಾದಿನಾಲಯ  
**K.S.INSTITUTE OF TECHNOLOGY**



(Approved by AICTE, New Delhi & Affiliated to VTU, Belgaum)  
#14, Raghuvanahalli, Kanakapura Road, Bangalore - 560 062.  
Tel : +91 80 28435722 \ 724, Fax : +91 80 28435723 www.ksit.ac.in

Date: 12.11.2013

## Installation Certificate

To,  
Manvish eTech Pvt. Ltd.,  
No. 78, Elephant Rock Road,  
3<sup>rd</sup> Block, Jayanagar,  
Bangalore - 560 011.

We hereby acknowledge the following: -

1. MiFaun Biometric Unit is Installed & working satisfactorily in our Office.
2. Administrator login details have been imparted to our competent person.
3. Fingerprint registration of our employees has been done.
4. MiFaun biometric Unit connected to the server successfully & data communication is taking place.

Activity	Details
MiFaun Biometric device Unit ID	109001011, 109001012, 109001013
Administrator Login details provided to	Mr. K.Venugopal Naidu
Software Demonstration and transfer	Mr. K.Venugopal Naidu

Thanking you,

For KSIT

*[Signature]*  
12.11.13

Name: Dr.T.V.Govindaraju  
Designation: Principal

*Received*  
*[Signature]*  
12/11/13



**MANVISH**  
eTech Pvt. Ltd.,

**INVOICE**

<b>To,</b> K.S.Institute of Technology No. 14, Raghuvanahalli, Kanakapura Main Road, Bangalore-560 062 Tel: 080-28435722/724		<b>Invoice No.45</b> Date:29/10/2013 Your PO Ref : KSIT/PO/5234/2013-14 Date:14/08/2013		
SL	Description	Qty	Rate/Unit	Amount (Rs)
1	miFaun Handheld computer	3	22,750	68,250.00
VAT@5.5%				3,753.00
<b>Total</b>				<b>72,003.00</b>

**Amount Chargeable in words:**

(Rupees: Seventy Two Thousand and Three Only)

Payment is through Bank transfer/DD/ Cheque in favour of **Manvish eTech Pvt. Ltd.**

**TIN/VAT # 29861110771**

**For Manvish eTech Pvt. Ltd.**

**Authorized Signatory**



PAYMENT DETAILS	
CHQ/VR No:	051911 Dt 05.12.13
AMOUNT Rs	72,003/-
SECRETARY	Receiver's Signature TREASURER

Three devices Received and it is working. In

All the features  
have been explained  
and is working in  
good condition  
3/12/13

Ven  
OM/AIC  
process for payment  
4.12.13

**Manvish eTech Pvt Ltd**

#78, Elephant Rock Road, 3rd Block, Jayanagar, Bangalore - 560 011.  
Tel : +91-80-2244 4365 / 2244 1195, Web : www.manvish.com



# K. S. INSTITUTE OF TECHNOLOGY

BANGALORE

Dtd.28.02.2020

Principal,  
KSIT  
BENGALURU.

Sir,

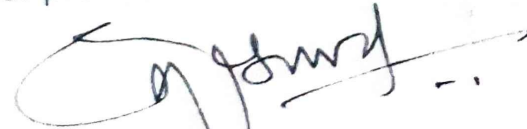
Sub: Request for procurement of 2 Nos. new  
face recognition biometric equipments.

---

This is to bring to your kind notice that we have purchased 3 Nos. thumb impression biometric devices from Manvish eTech Pvt Ltd vide Invoice No.45 dtd 29.10.2013 and installed in different locations at our college premises. Now, we are facing following problems as the same became old.

- 1) The thumb impressions are not being detected.
- 2) Unable to delete the resigned users ie., staff. As and when we take print-outs the old staff's details are being reflected in the monthly attendance report.
- 3) Frequently going out of order and resulting in missing of attendance of the staff.
- 4) Whenever we need the service / rectification of the equipments the supplier is not responding to our calls.

Therefore, we hereby propose to procure 2 Nos. new face recognition biometric devices at the earliest and replace with the existing equipments which may ease our problems to the maximum extent.

  
(Y.V.KESAVAN)  
SENIOR MANAGER  
K.S. INSTITUTE OF TECHNOLOGY  
BENGALURU-560 109

*Handwritten notes:*  
Report on the  
ITC & budget for  
Mar. 2020



**KSIT**  
K.S. INSTITUTE OF TECHNOLOGY

Kannavari Sangham 1952

K.S. GROUP OF INSTITUTIONS

ಕೆ.ಎಸ್. ತಾಂತ್ರಿಕ ಮಹಾವಿದ್ಯಾಲಯ

**K.S. INSTITUTE OF TECHNOLOGY**

(Approved by AICTE, New Delhi & Affiliated to VTU, Belgaum)

# 14, Raghuvanahalli, Kanakapura Road, Bangalore - 560 062.

Tel : +91 080 28435722 / 724, Fax : +91 80 28435723 www.ksit.ac.in



PAYMENT DETAILS 2	
CHQ / VR No	101913 Dt 7.4.16
AMOUNT Rs	4,500/-
SECRETARY	TREASURER

Date: 21/12/15

To  
Manvish eTech Pvt Ltd,  
#78, Elephant Rock Road,  
3<sup>rd</sup> Block Jayanagar,  
Bangalore- 560011

Dear Sir,

Sub: Annual Maintenance for Bio Metric Devices

Ref: Your Quotation dated 17/06/2015

With reference to the above, we are pleased to place order for Annual Maintenance contract support for Bio metric devices for KSIT, Bangalore as per the following specifications, terms & conditions.

SL No	DESCRIPTION	Qty	Price/Unit(Rs.)	Amount(Rs.)
1	AMC for Hardware Maintenance Servicing of Hardware Preventive Maintenance Including Software Updating of Weekly Report, Deletion of employees, Absentee's list of employees, early going or Late coming employees of Date, week, month wise & Dept wise. Time to time Requirement /Modification	02	4500	9,000.00
Total Amount				9,000.00

Terms & Conditions

1. Prices are inclusive of all taxes.
2. Support: 1 year onsite service delivery.
3. Payment: Against delivery and installation & Service.
4. Two Bio metric devices will be under AMC & One Bio Metric device will be using for Registration. Three devices should be connected to server to get reports.

Thanking you,

Yours faithfully

*K.V. Naidu*  
(K.VENKATESH NAIDU)  
SECRETARY

PAYMENT DETAILS 1	
CHQ / VR No	107152 Dt 16.01.16
AMOUNT Rs	4,500/-
SECRETARY	TREASURER





Kammavari Sangham (R) 1952  
K.S. GROUP OF INSTITUTIONS

ಕೆ.ಎಸ್. ತಾಂತ್ರಿಕ ಮಹಾವಿದ್ಯಾಲಯ

**K.S. INSTITUTE OF TECHNOLOGY**

Affiliated to VTU, Belagavi & Approved by AICTE, New Delhi, Accredited NAAC & NBA (CSE, ECE and ME)

# 14, Raghuvanahalli, Kanakapura Road, Bengaluru - 560 109.

Tel : 080 28435722 / 24, Fax : 080 28435723

E-mail : principal.ksit@gmail.com / principal@ksit.edu.in | Website : www.ksit.edu.in

Ref: KSIT/PO/6554/2023-24

Date: 16.10.2023

M/s. Vaishnavi Systems and Solutions  
No. 966, 9<sup>th</sup> Main, 11<sup>th</sup> Cross Road,  
BEML Layout 3<sup>rd</sup> Stage, Rajarajeshwari Nagar,  
BANGALORE – 560 098.

Dear Sir,

**Sub: Purchase Order for Eduwize - Education Management System.**

With reference to the above, we are pleased to place the order for supply of ERP for K.S.Institute of Technology, No. 14, Raghuvanahalli, Kanakapura Main Road, Bengaluru-560109.

Sl. No	Description	No. of Students	Unit Rate	Total Amount
1	Eduwize - Education Management System	1800	85/-	1,53,000/-
TOTAL		-	-	1,53,000/-

**(Rupees one lakh fifty three thousand only)**

**Terms & Conditions:**

1. The above rates are inclusive of all taxes.
2. Advance Payment of Rs. 18,000/- against order, balance payment against satisfactory installation and working condition.

Thanking you,

Yours faithfully,

(R.LEELA SHANKAR RAO)

From,

Kumar K

Assistant Professor,

SPOC,ERP(Eduwize)

Department of Computer Science & Engineering,

K.S Institute of Technology,Bengaluru.109

To,

The Principal,

K.S Institute of Technology, Bengaluru.109

Respected Sir,

Subject: Request letter to release Advance amount for ERP implementation

This is regarding the payment request -as per your direction, the pilot project on ERP for 3 months. The estimation cost per student is stated as Rs.85.


Approximate students 1700 x Rupees. 85/- = 1,44,500/- Rupees,which charges nearly 12,000/- per month. As it is quoted for 3 month pilot run, the cost estimation is around 36,000/- rupees.

We can initiate the trial run by processing 50% i.e 18,000/- of fees towards Vaishnavi Systems and Solutions,Bengaluru(Eduwize).


I Kindly request you to do the needful for the same.

Thanking You.

Yours Sincerely-

  
22/09/23

Forwarded to Secretary for kind approval

  
22/09/2023

  
22/9/23



From,

9/11/2023

Kumar K

Associate Professor,

ERP Coordinator,

Dept. of CSE,KSIT,Bengaluru.109

To,

The Principal,

KSIT,Bengaluru.109

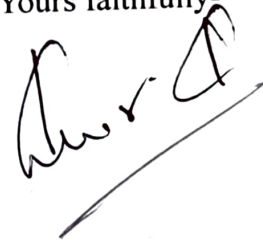
Respected Sir,

***Subject: Request letter to purchase SMS package for ERP software.***

w.r.t above subject the quotation for SMS purchase is attached. I kindly request you to consider and do the needful for the same.

Thanking You.

Yours faithfully-



ForWARDED to Secretary for kind  
approval

See  
10/11/23

## EDUWIZE TRANSACTIONAL SMS OFFERING


Eduwize Offers the efficient and cost effective Messaging Services, Following are the services offered

- 1) SMS Account Creation
- 2) Contacts Creation
- 3) Sender ID Creation (Sender Id denotes your 6 character identification)
- 4) Template Creation
- 5) Sending SMS
- 6) Delivery Reports

### PRICING

Quantity	Price Per SMS(in Paise)	Price(in Rs.)	18% GST	Total Price (in Rs.)	Validity
5000	23	1150	207	1357	1 Year
10000	21	2100	378	2478	1 Year
25000	19	4750	855	5605	Unlimited
50000	17	8500	1530	10030	Unlimited
100000	17	17000	3060	20060	Unlimited

### ADVANTAGES

- 
1. Cost Effective bulk messaging, much less than the cost you incur on regular messaging.
  2. Multiple Criteria selection for better coverage.
  3. Dedicated Helpline for creating template, message and sending sms.

### NOTE

1. Need to register on any DLT Platform before creating account.
2. DLT Charges Rs.5900/- Need to pay by trust/school/colleges by their own.

### CONTACT INFORMATION

Basavaraj : 9880089840  
Bhagyaraj: 9739445000  
Shreedhar: 8105542786

email: [basavaraj@eduwizerp.in](mailto:basavaraj@eduwizerp.in)  
email: [bhagyaraj@eduwizerp.in](mailto:bhagyaraj@eduwizerp.in)  
email: [shreedhar@eduwizerp.in](mailto:shreedhar@eduwizerp.in)





Kammavari Sangham (R) 1952  
K.S. GROUP OF INSTITUTIONS

ಕೆ.ಎಸ್. ತಾಂತ್ರಿಕ ಮಹಾವಿದ್ಯಾಲಯ

**K.S. INSTITUTE OF TECHNOLOGY**

Affiliated to VTU, Belagavi & Approved by AICTE, New Delhi, Accredited NAAC & NBA (CSE, ECE and ME)

# 14, Raghuvanahalli, Kanakapura Road, Bengaluru - 560 109.

Tel : 080 28435722 / 24, Fax : 080 28435723

E-mail : principal.ksit@gmail.com / principal@ksit.edu.in | Website : www.ksit.edu.in

Ref: KSIT/PO/6568/2023-24

Date: 15.11.2023

M/s. Vaishnavi Systems and Solutions  
No. 966, 9<sup>th</sup> Main, 11<sup>th</sup> Cross Road,  
BEML Layout 3<sup>rd</sup> Stage, Rajarajeshwari Nagar,  
BANGALORE – 560 098.

Dear Sir,

**Sub: Purchase Order for SMS Package for ERP Software.**

With reference to the above, we are pleased to place the order for supply of SMS Package for ERP Software for K.S.Institute of Technology, No. 14, Raghuvanahalli, Kanakapura Main Road, Bengaluru-560109.

Sl. No	Description	Quantity	Price / SMS (in Paise)	Total Amount
1	Eduwize - Transactional SMS	50000	0.17	8,500/-
TOTAL				8,500/-
Add: GST 18%				1,530/-
GRAND TOTAL				10,030/-

(Rupees ten thousand and thirty only)

**Terms & Conditions:**

1. The above rates are inclusive of all taxes.
2. Payment against satisfactory installation and working condition.

Thanking you,

Yours faithfully,

(R.LEELA SHANKAR RAO)



**KSIT**  
K.S. INSTITUTE OF TECHNOLOGY

Kammavari Sangham (R) 1952  
K.S. GROUP OF INSTITUTIONS

ಕೆ.ಎಸ್. ತಾಂತ್ರಿಕ ಮಹಾವಿದ್ಯಾಲಯ

**K.S. INSTITUTE OF TECHNOLOGY**

Affiliated to VTU, Belagavi & Approved by AICTE, New Delhi, Accredited NAAC & NBA (CSE, ECE and ME)

# 14, Raghuvanahalli, Kanakapura Road, Bengaluru - 560 109.

Tel : 080 28435722 / 24, Fax : 080 28435723

E-mail : principal.ksit@gmail.com / principal@ksit.edu.in | Website : www.ksit.edu.in

Ref: KSIT/PO/6568/2023-24

Date: 15.11.2023

M/s. Vaishnavi Systems and Solutions  
No. 966, 9<sup>th</sup> Main, 11<sup>th</sup> Cross Road,  
BEML Layout 3<sup>rd</sup> Stage, Rajarajeshwari Nagar,  
BANGALORE – 560 098.

Dear Sir,

**Sub: Purchase Order for SMS Package for ERP Software.**

With reference to the above, we are pleased to place the order for supply of SMS Package for ERP Software for K.S.Institute of Technology, No. 14, Raghuvanahalli, Kanakapura Main Road, Bengaluru-560109.

Sl. No	Description	Quantity	Price / SMS (in Paise)	Total Amount
1	Eduwize - Transactional SMS	50000	0.17	8,500/-
TOTAL				8,500/-
Add: GST 18%				1,530/-
GRAND TOTAL				10,030/-

(Rupees ten thousand and thirty only)

**Terms & Conditions:**

1. The above rates are inclusive of all taxes.
2. Payment against satisfactory installation and working condition.

Thanking you,

Yours faithfully,

(R.LEELA SHANKAR RAO)



From,

9/11/2023

Kumar K

Associate Professor,

ERP Coordinator,

Dept. of CSE,KSIT,Bengaluru.109

To,

The Principal,

KSIT,Bengaluru.109

Respected Sir,

***Subject: Request letter to purchase SMS package for ERP software.***

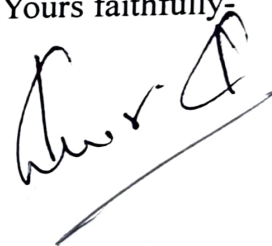
w.r.t above subject the quotation for SMS purchase is attached. I kindly request you to consider and do the needful for the same.

Thanking You.

Yours faithfully-

*ForWARDED to Secretary for kind  
approval*

*See  
10/11/23*



## EDUWIZE TRANSACTIONAL SMS OFFERING


Eduwize Offers the efficient and cost effective Messaging Services, Following are the services offered

- 1) SMS Account Creation
- 2) Contacts Creation
- 3) Sender ID Creation (Sender Id denotes your 6 character identification)
- 4) Template Creation
- 5) Sending SMS
- 6) Delivery Reports

### PRICING

Quantity	Price Per SMS(in Paise)	Price(in Rs.)	18% GST	Total Price (in Rs.)	Validity
5000	23	1150	207	1357	1 Year
10000	21	2100	378	2478	1 Year
25000	19	4750	855	5605	Unlimited
50000	17	8500	1530	10030	Unlimited
100000	17	17000	3060	20060	Unlimited

### ADVANTAGES

- 
1. Cost Effective bulk messaging, much less than the cost you incur on regular messaging.
  2. Multiple Criteria selection for better coverage.
  3. Dedicated Helpline for creating template, message and sending sms.

### NOTE

1. Need to register on any DLT Platform before creating account.
2. DLT Charges Rs.5900/- Need to pay by trust/school/colleges by their own.

### CONTACT INFORMATION

Basavaraj : 9880089840  
Bhagyaraj: 9739445000  
Shreedhar: 8105542786

email: [basavaraj@eduwizerp.in](mailto:basavaraj@eduwizerp.in)  
email: [bhagyaraj@eduwizerp.in](mailto:bhagyaraj@eduwizerp.in)  
email: [shreedhar@eduwizerp.in](mailto:shreedhar@eduwizerp.in)

From,

31/10/2023

Kumar. K

Assistant Professor,

ERP Coordinator,

Department of CSE

K.S.I.T, Bengaluru.

To,

The Principal,

K.S.I.T, Bengaluru.

To SRO  
Release the Advance  
Payment of Rs 18,000/-  
Dr  
31/10/23

Respected Sir,

Request to transfer advance payment  
towards ERP Software in favour of  
Vaishnavi Systems and Solutions Bengaluru.

w.r.t above subject, I kindly request you to  
transfer the advance payment for the below  
account.

Acc. Name: - Vaishnavi Systems and Solutions,  
Bengaluru.

Acc. no: 10397630000358

IFSC code: HDFC0001039.

Branch: Rajarajeshwari nagar, Bengaluru.

Thanking You.

Yours faithfully  
Kumar