



ALTERNATE SOURCES OF ENERGY AND ENERGY CONSERVATION MEASURES





The institution always strives hard and leaves no stones unturned while contributing to safeguard the environment and sustainable usage of natural resources.

The institute has replaced:

- Compact fluorescent tubes with light emitting diode bulbs (LED).
- Latest generation computers with LCD/ TFT/ LED monitors.

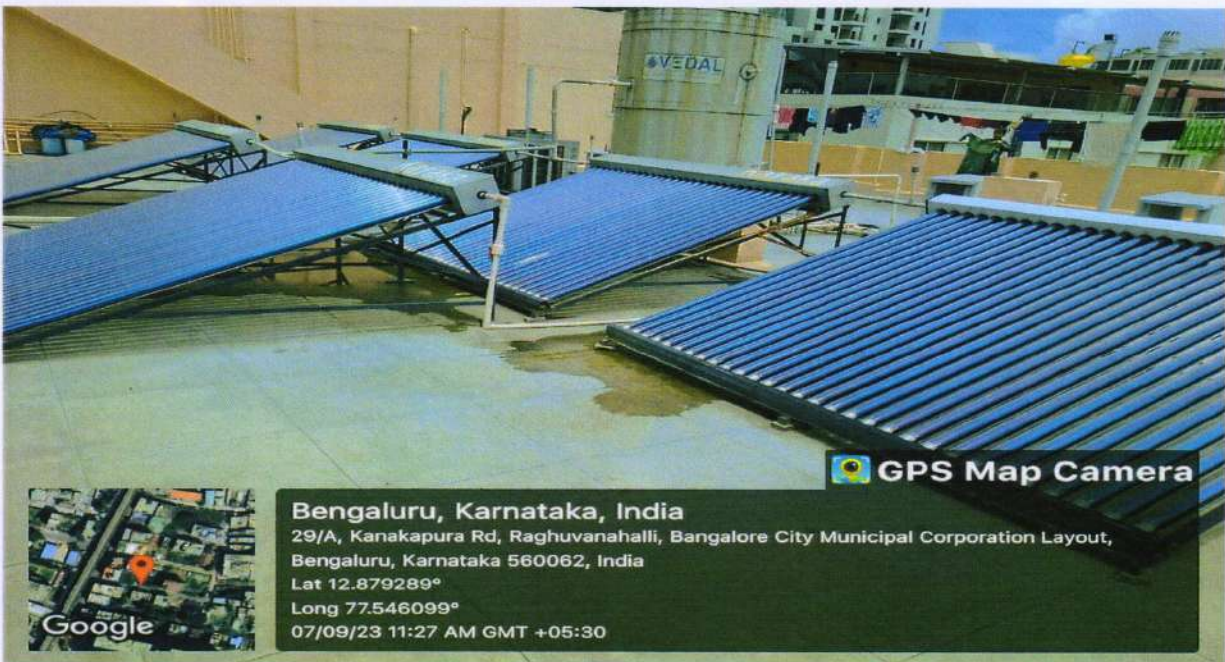
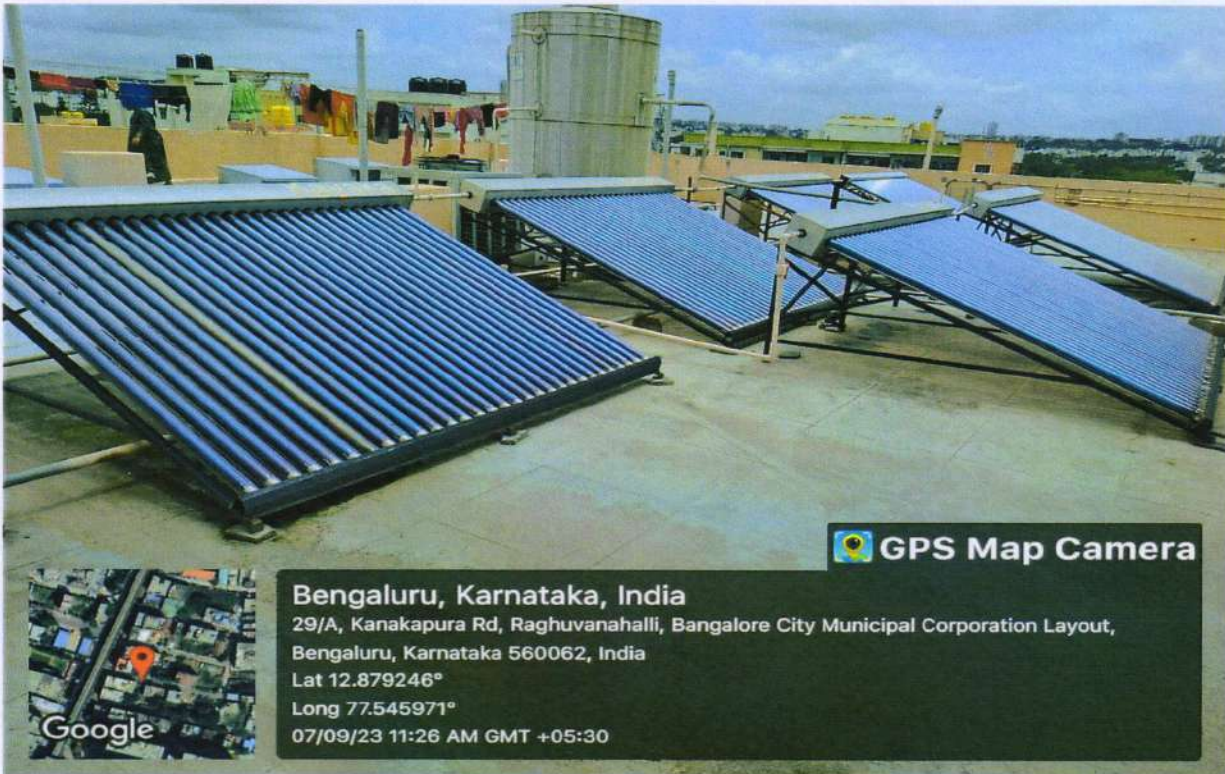
Both of which are long lasting, low cost, energy saving, environmentally friendly and adaptable.

LED BULBS AND ENERGY SAVER COMPUTERS WITH MONITORS AT:

 <p>Bengaluru, Karnataka, India No 3490, 2nd Floor 4th H Bld, 80Ft Rd, Banshankari, near KSIT Engineering College, Raghuvanahalli, Bangalore City Municipal Corporation Layout, Bengaluru, Karnataka 560062, India Lat 12.87936° Long 77.544379° 02/08/23 11:03 AM GMT +05:30</p>	 <p>Bengaluru, Karnataka, India No 3490, 2nd Floor 4th H Bld, 80Ft Rd, Banshankari, near KSIT Engineering College, Raghuvanahalli, Bangalore City Municipal Corporation Layout, Bengaluru, Karnataka 560062, India Lat 12.879268° Long 77.544345° 02/08/23 11:04 AM GMT +05:30</p>
<p>Computer Network Laboratory (Old Block)</p>	<p>Machine Learning/ DBMS Laboratory (Old Block)</p>
 <p>Bengaluru, Karnataka, India No 3490, 2nd Floor 4th H Bld, 80Ft Rd, Banshankari, near KSIT Engineering College, Raghuvanahalli, Bangalore City Municipal Corporation Layout, Bengaluru, Karnataka 560062, India Lat 12.879245° Long 77.544552° 02/08/23 11:05 AM GMT +05:30</p>	 <p>Bengaluru, Karnataka, India No 3490, 2nd Floor 4th H Bld, 80Ft Rd, Banshankari, near KSIT Engineering College, Raghuvanahalli, Bangalore City Municipal Corporation Layout, Bengaluru, Karnataka 560062, India Lat 12.879268° Long 77.544345° 02/08/23 11:05 AM GMT +05:30</p>
<p>LED Outdoor Flood Lights (Old Block)</p>	<p>LED Outdoor Ceiling Lights (Old Block)</p>

S. Kumar
PRINCIPAL
K.S. INSTITUTE OF TECHNOLOGY
BENGALURU - 560 109.

ENERGY CONSERVATION



Shamol

PRINCIPAL
K.S. INSTITUTE OF TECHNOLOGY
BENGALURU - 560 109.



GPS Map Camera



Bengaluru, Karnataka, India

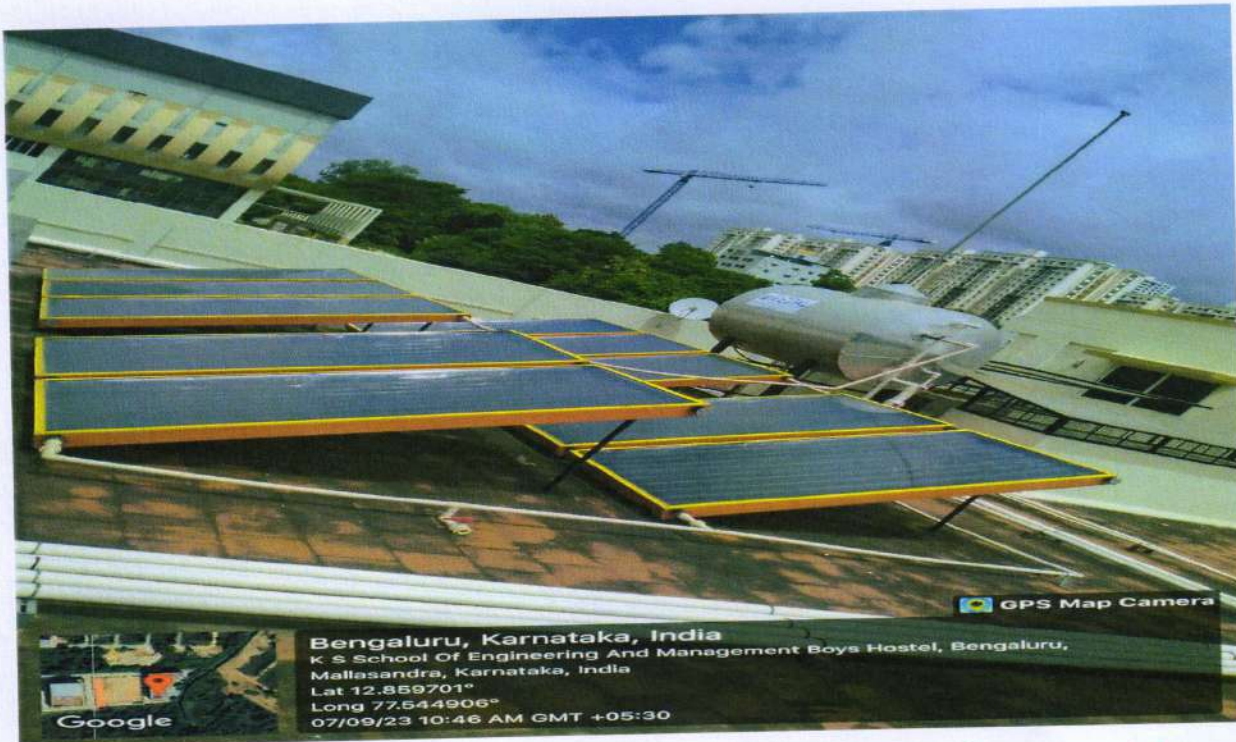
K S School Of Engineering And Management Boys Hostel, Bengaluru, Mallasandra, Karnataka, India

Lat 12.859718°

Long 77.544835°

07/09/23 10:46 AM GMT +05:30

Google



GPS Map Camera



Bengaluru, Karnataka, India

K S School Of Engineering And Management Boys Hostel, Bengaluru, Mallasandra, Karnataka, India

Lat 12.859701°

Long 77.544906°

07/09/23 10:46 AM GMT +05:30

Google

K. S. Kumar
PRINCIPAL
K.S. INSTITUTE OF TECHNOLOGY
BENGALURU - 560 109.



K.S. INSTITUTE OF TECHNOLOGY, BANGALORE - 560109

**MANAGEMENT OF THE VARIOUS TYPES OF DEGRADABLE AND
NONDEGRADABLE WASTE**

SOLID WASTE MANAGEMENT



Sharma G
Principal

PRINCIPAL
K.S. INSTITUTE OF TECHNOLOGY
BENGALURU - 560 109.



GPS Map Camera

Bengaluru, Karnataka, India
KSIT Engineering College, Raghuvanahalli, Bangalore City Municipal Corporation Layout,
Bengaluru, Karnataka 560062, India
Lat 12.879339°
Long 77.544424°
07/09/23 02:32 PM GMT +05:30



GPS Map Camera

Bengaluru, Karnataka, India
KSIT Engineering College, Raghuvanahalli, Bangalore City Municipal Corporation Layout,
Bengaluru, Karnataka 560062, India
Lat 12.879339°
Long 77.544424°
07/09/23 02:29 PM GMT +05:30

K. Kumars
PRINCIPAL
K.S. INSTITUTE OF TECHNOLOGY
BENGALURU - 560 109. -



Bengaluru, Karnataka, India
KSIT Engineering College, Raghuvanahalli, Bangalore City Municipal Corporation Layout,
Bengaluru, Karnataka 560062, India
Lat 12.879339°
Long 77.544424°
07/09/23 02:29 PM GMT +05:30



Bengaluru, Karnataka, India
KSIT Engineering College, Raghuvanahalli, Bangalore City Municipal Corporation Layout,
Bengaluru, Karnataka 560062, India
Lat 12.879339°
Long 77.544424°
07/09/23 02:31 PM GMT +05:30

K. Kumar C.

PRINCIPAL
PRINCIPAL
K.S. INSTITUTE OF TECHNOLOGY
BENGALURU - 560 109.



K.S. INSTITUTE OF TECHNOLOGY, BANGALORE – 560109

WATER CONSERVATION

ROOF TOP RAINWATER HARVESTING RECHARGE PIT



Shama G
Principal

PRINCIPAL
K.S. INSTITUTE OF TECHNOLOGY
BANGALURU - 560 109.



KSIT College Kankapura Road, Raghuvanahalli, Bangalore City Municipal Corporation Layout, Bengaluru, Karnataka 560062, India

Latitude
12.879815°
Local 12:19:41 PM
GMT 06:49:41 AM

Longitude
77.54429°
Altitude 886 m
Monday, 31.07.2023



No 3490, 2nd Floor 4th H Bldg, 80ft Rd, Banshankari, near KSIT Engineering College, Raghuvanahalli, Bangalore City Municipal Corporation Layout, Bengaluru, Karnataka 560062, India

Latitude
12.879541666666666°
Local 12:20:50 PM
GMT 06:50:50 AM

Longitude
77.544318333333334°
Altitude 886 m
Monday, 31.07.2023



34, Kankapura Rd, 4th H block, Raghuvanahalli, Bangalore City Municipal Corporation Layout, Bengaluru, Karnataka 560062, India

Latitude
12.879635°
Local 12:20:34 PM
GMT 06:50:34 AM

Longitude
77.544338333333333°
Altitude 886 m
Monday, 31.07.2023

Shrinivas G
PRINCIPAL
K.S. INSTITUTE OF TECHNOLOGY
BENGALURU - 560 109.



KSIT College Kankapura Road, Raghuvanahalli, Bangalore
City Municipal Corporation Layout, Bengaluru, Karnataka
560062, India

Latitude	Longitude
12.879692721180618°	77.54426096566021°
Local 12:26:51 PM	Altitude 814 meters
GMT 06:56:51 AM	Tuesday, 06 Sep 2022



14, Kanakapura Rd, Raghuvanahalli, Bangalore City Municipal
Corporation Layout, Bengaluru, Karnataka 560062, India

Latitude	Longitude
12.879094504751265°	77.54472834058106°
Local 12:30:02 PM	Altitude 856 meters
GMT 07:00:02 AM	Tuesday, 06 Sep 2022

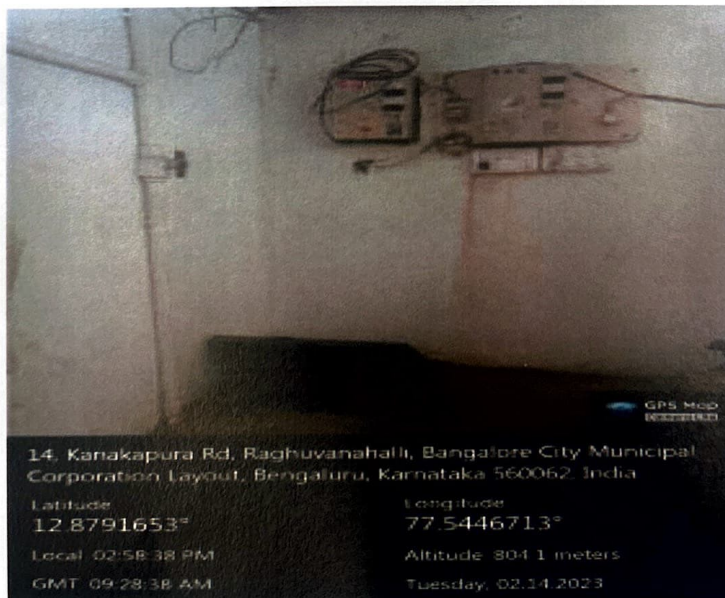
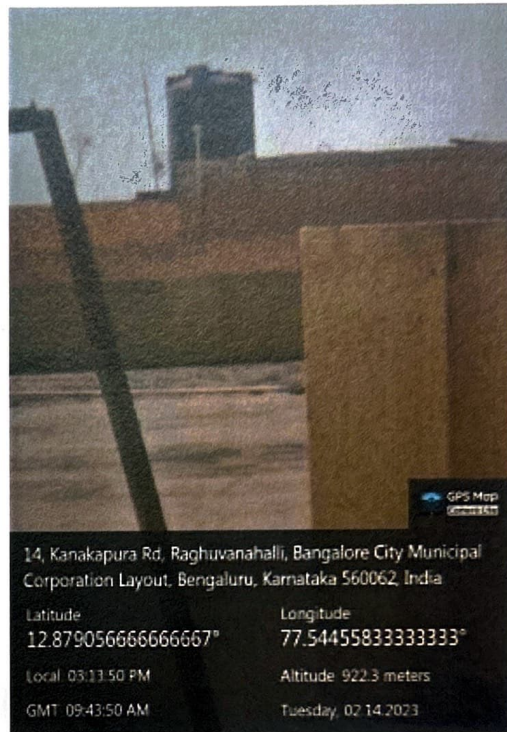
Sharma. S.
Principal

PRINCIPAL
K.S. INSTITUTE OF TECHNOLOGY
BENGALURU - 560 109.



K.S. INSTITUTE OF TECHNOLOGY, BANGALORE – 560109

Maintenance of Water Bodies and Distribution system in the Campus

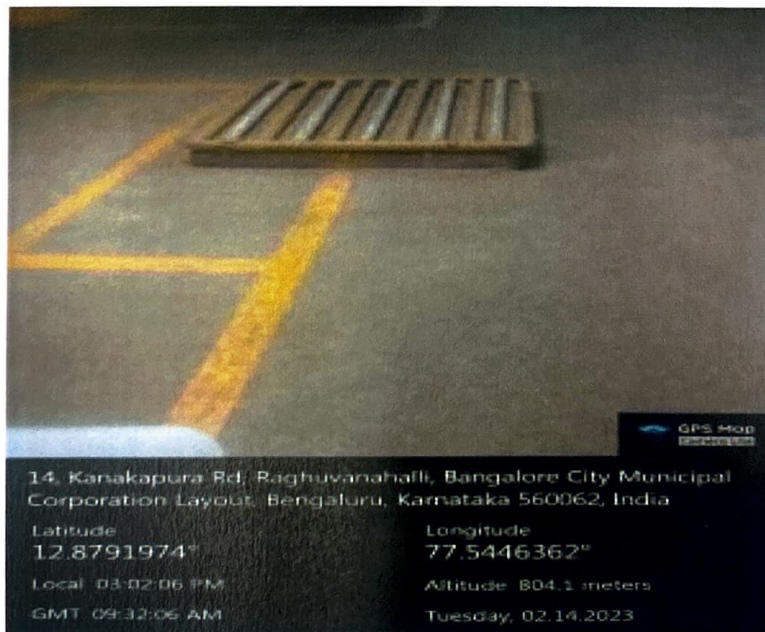


[Handwritten Signature]

**PRINCIPAL
K.S. INSTITUTE OF TECHNOLOGY
BENGALURU - 560 109.**



Bore well Recharge



Shenas. C
 PRINCIPAL



K.S. INSTITUTE OF TECHNOLOGY, BANGALORE - 560109

GREEN CAMPUS INITIATIVES

The institutional initiatives for greening the campus are as follows:

1. Restricted entry of automobiles
2. Use of bicycles/Battery-powered vehicles
3. Pedestrian-friendly pathways
4. Ban on use of plastic
5. Landscaping



#3456, 1st floor, 4th H block Bansankari 6th stage, Kanakapura Rd, Raghuvanahalli, Bangalore City Municipal Corporation Layout, Bengaluru, Karnataka 560062, India

Latitude
12.87897°

Local 12:32:55 PM
GMT 07:02:55 AM

Longitude
77.5449307°

Altitude 890 m
Monday, 31.07.2023

Use of bicycles/Battery-powered vehicles

PRINCIPAL
K.S. INSTITUTE OF TECHNOLOGY
BENGALURU - 560 109.



KSIT College Kankapura Road, Raghuvanahalli, Bangalore City Municipal Corporation Layout, Bengaluru, Karnataka 560062, India

Latitude
12.879828333333334°
Local 12:25:16 PM
GMT 06:55:16 AM

Longitude
77.54437166666666°
Altitude 886 m
Monday, 31.07.2023



VGHW+M3H, 80 Feet Rd, Raghuvanahalli, Bangalore City Municipal Corporation Layout, Bengaluru, Karnataka 560062, India

Latitude
12.879231666666666°
Local 12:35:04 PM
GMT 07:05:04 AM

Longitude
77.54507666666667°
Altitude 889 m
Monday, 31.07.2023

Pedestrian-friendly pathways

PRINCIPAL
K.S. INSTITUTE OF TECHNOLOGY
BENGALURU - 560 109.



#3456, 1st floor, 4th H block Bansankari 6th stage, Kanakapura Rd, Raghuvanahalli, Bangalore City Municipal Corporation Layout, Bengaluru, Karnataka 560062, India

Latitude
12.879641666666664°

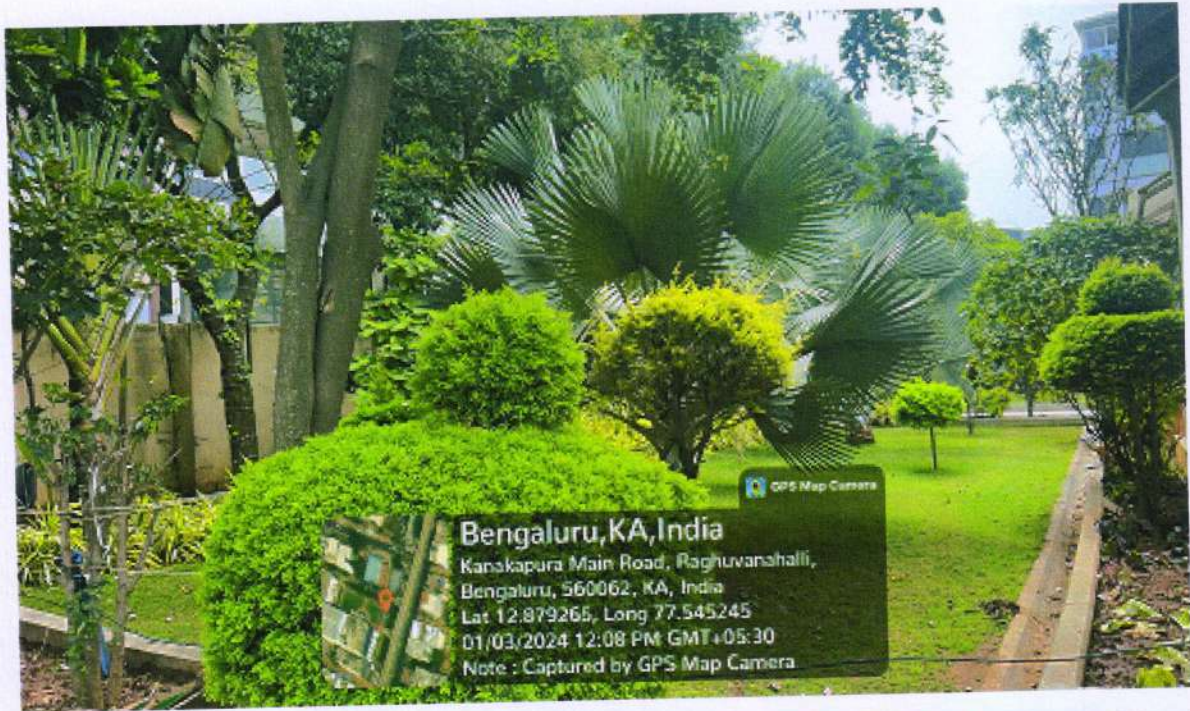
Local 12:26:37 PM
GMT 06:56:37 AM

Longitude
77.54460333333333°

Altitude 886 m
Monday, 31.07.2023

Landscaping

K. Kumar. C.
PRINCIPAL
K.S. INSTITUTE OF TECHNOLOGY
BENGALURU - 560 109.



LANDSCAPING

S. K. Menon
PRINCIPAL
K.S. INSTITUTE OF TECHNOLOGY
BENGALURU - 560 109.



K.S. INSTITUTE OF TECHNOLOGY, BANGALORE - 560109

DISABLED-FRIENDLY, BARRIER FREE ENVIRONMENT

The Institute provides excellent facilities like wheel-chair ramps, lifts to access the class rooms and, hygiene wash rooms for the disabled students.


1. Built environment with ramps/ lifts for easy access to class rooms

Geo-Tagged photos of the ramps

Wheel-chair Ramps: An easy navigation over stairs	
 <p>Bengaluru, Karnataka, India VGHW+R2G, Kanakapura Rd, Raghuvanahalli, Bangalore City Municipal Corporation Layout, Bengaluru, Karnataka 560062, India Lat 12.879381° Long 77.544975° 02/08/23 11:08 AM GMT +05:30</p>	 <p>Bengaluru, Karnataka, India 14, Kanakapura Rd, Raghuvanahalli, Bangalore City Municipal Corporation Layout, Bengaluru, Karnataka 560062, India Lat 12.879381° Long 77.544924° 02/08/23 03:14 PM GMT +05:30</p>
New Block Entrance	Parking Lot Level 1

Geo-Tagged photos of the lifts/ elevators

Passenger Lifts/ Elevators: Easy access to class rooms	
 <p>Bengaluru, Karnataka, India VGHW+R2G, Kanakapura Rd, Raghuvanahalli, Bangalore City Municipal Corporation Layout, Bengaluru, Karnataka 560062, India Lat 12.879381° Long 77.544975° 02/08/23 11:10 AM GMT +05:30</p>	 <p>Bengaluru, Karnataka, India VGHW+R2G, Kanakapura Rd, Raghuvanahalli, Bangalore City Municipal Corporation Layout, Bengaluru, Karnataka 560062, India Lat 12.879381° Long 77.544975° 02/08/23 11:12 AM GMT +05:30</p>
New Block Entrance	New Block Exit


PRINCIPAL
K.S. INSTITUTE OF TECHNOLOGY
BANGALURU - 560 109.

2. Disabled-friendly washroom/ toilet

Geo-Tagged photo of the washroom/ toilet with Disabled Grab Bars

Disabled Grab Bars: Provide safety and comfort to the user



New Block Ground Floor

Sharma
PRINCIPAL
K.S. INSTITUTE OF TECHNOLOGY
BENGALURU - 560 109.